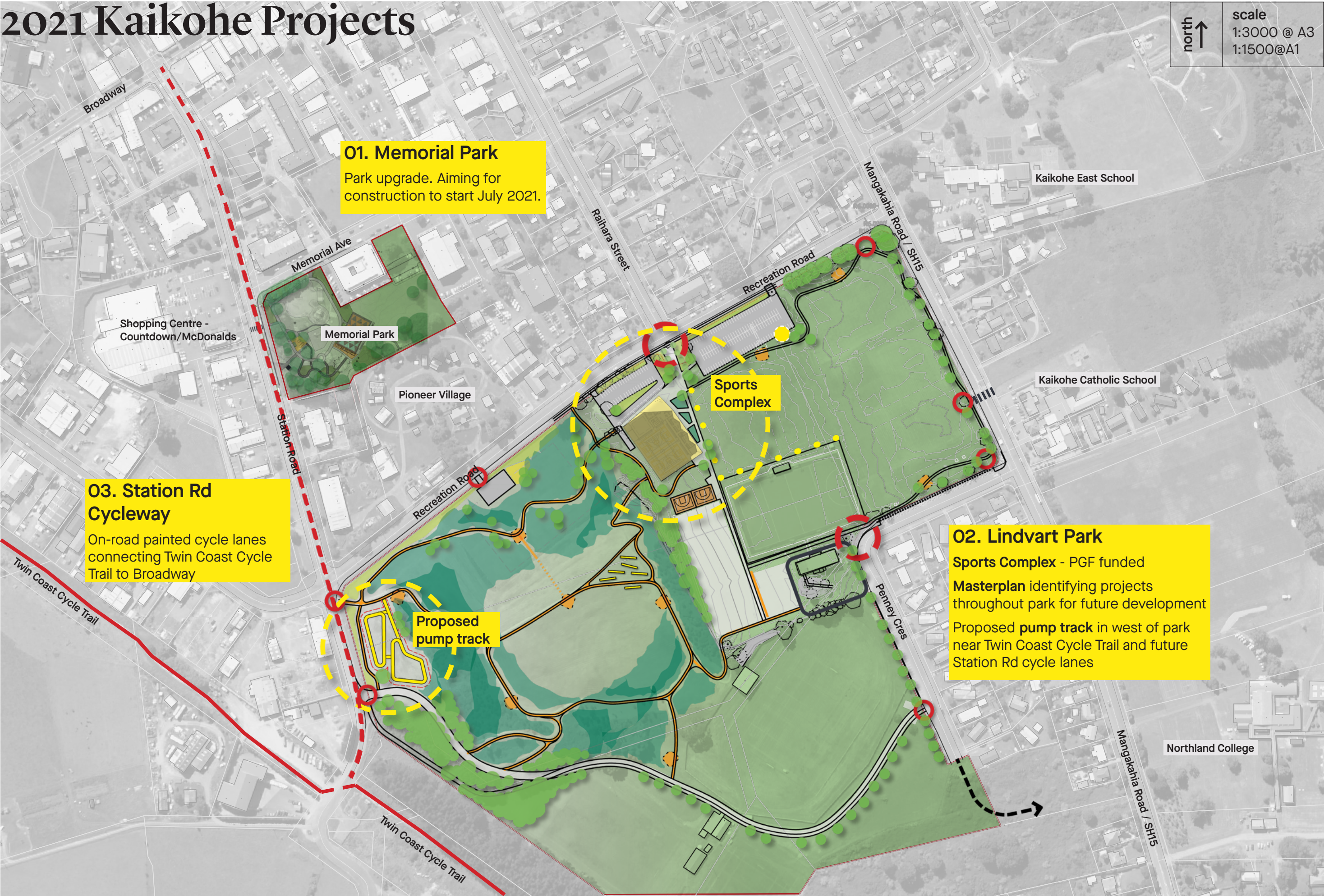


2021 Kaikohe Projects


north
↑

scale
1:3000 @ A3
1:1500@A1



Station Rd Cycleway



north
 

scale
 1:3000 @ A3
 1:1500@A1

Preliminary design elements

The Station Road cycleway will consist of on-road painted cycle lanes, one on each side of the road. The cycle lanes will interact with a number of features along station road. This creates opportunity for landscaping and placemaking projects.

While the design will need to conform to on-road cycleway standards (i.e. green and white paint) there may be opportunity to add graphic features that reflect Kaikohe identity at key points along the cycleway.

Key

1	Intersection with Broadway Safe integration with Broadway streetscape Potential for directional/information signage and/or graphic features
2	Intersection with Memorial Ave Safe integration with traffic movements in/out of Memorial Ave and the shopping centre. Connection to future Memorial Park entrance
3	Pedestrian crossing Pedestrian crossing may need to be adapted to accommodate cycle lanes. Opportunity for graphic feature to slow cyclists
4	Memorial Park entrance Proposed location for new Wharepaku at Memorial Park - key entrance point for cyclists on Twin Coast Cycle Trail. Information signage, graphic feature
5	Intersection with Recreation Road Safe crossings and integration with existing stop points. Re-alignment of intersection road paint may be required Signage to direct cyclist along Recreation Rd to Lindvart Park and along Station Rd towards town Opportunity to improve berms
6	Link to proposed pump track Clear cycling connection (and signage) to proposed Pump Track
7	Connection with Twin Coast Cycle Trail Create improved gateway to connect the Twin Coast Cycle Trail to Kaikohe: landscaping, information and directional signage, graphic features indicating start of Station Rd cycleway
8	Streetscape changes On-street parking and other street elements may need to be adapted to allow space for cycleway. Options to be explored in design development Opportunity to plant new street trees in some berms (particularly south of Memorial Park)