

ĀKAU

# Memorial Park Masterplan

Concept development 2020

# Memorial Park Masterplan: context and process

What led to the masterplan, where we are now, and what happens next.

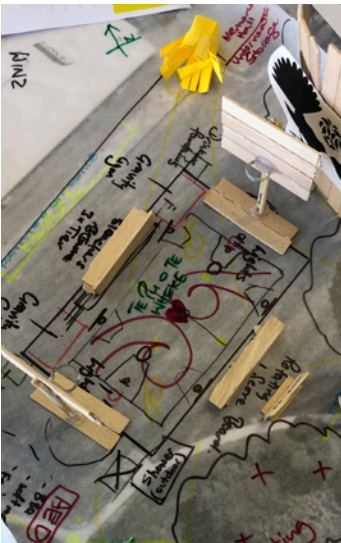
## Taitamariki and community workshop

31 Jan 2019

Knowledge sharing / site assessment / ‘ko wai ahau?’ / concept development

### Design Concepts

Whanau First  
Open Space  
Graphic Features



### Design Elements

- + basketball court
- + whānau space
- + bench seating
- + Custom ball screen
- + existing paths
- + exercise zone

## Memorial Park Masterplan

Feb-  
July  
2019

### 1. Basketball court construction

Summer  
2019/20

### 2. Whānau spaces design

May 2020: \$17,000 funding secured for...

- + learn-to-ride hui with tamariki and community - **held 31st July**
- + exercise zone hui with tamariki and community - **held 16 June**
- + developed and detailed design
- + construction drawings

June-  
Oct  
2020

current stage

## Next steps!

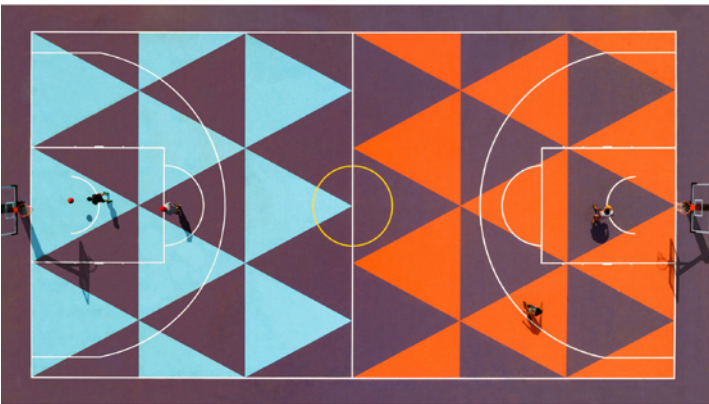
Future  
work

### Phased construction

Construction to begin spring 2020

1. Wharepaku
2. Then...?
3. Then...?

Phasing to be confirmed - projects depend on available funding.



# Phase 1: research and concepts

## Phase 1 included...

- › Hui and workshops with tamariki and community to find out what they would like to see happen in Memorial Park.
- › Site investigation to uncover opportunities and possibilities in Memorial Park.
- › Options testing of potential layouts and spaces

**ÄKAU**



# Memorial Park: existing site

## Strengths/weaknesses

### What's good?

- + Open space
- + new basketball court
- + lots of activity for tamariki
- + proximity to town

### What's not so good?

- + steep skatebowl
- + sightlines and safety
- + narrow, dead-end paths
- + too many (exotic) trees
- + few seating areas

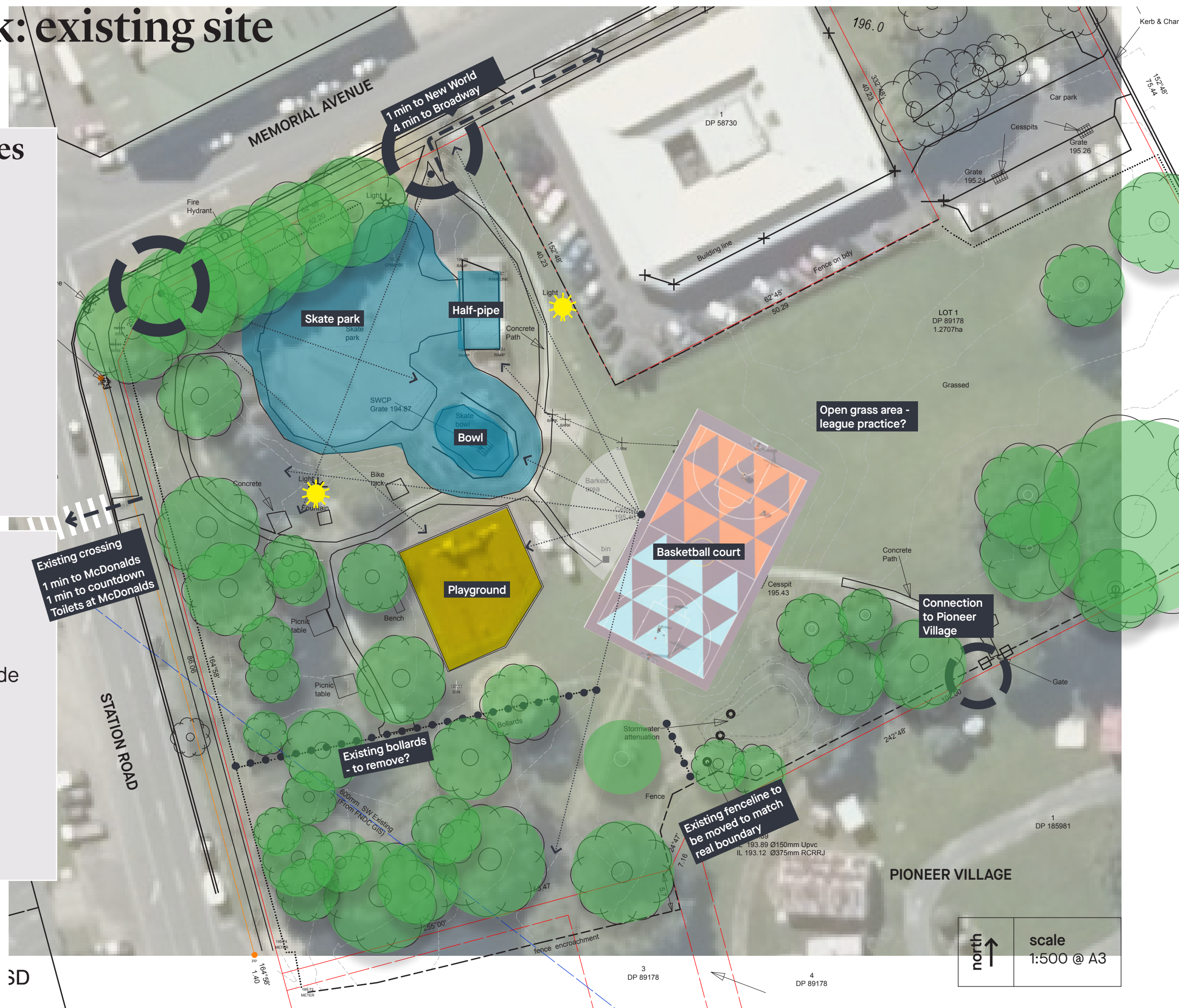
## Opportunities...

### Short term

- + whānau gathering area and general seating
- + exercise zone and learn to ride
- + widen key pathways
- + new planting

### Long term

- + paths and access heirarchy
- + develop play and skate park
- + tree assessment





# Design outlines for proposed new spaces

What could be included in new spaces at Memorial park, and what have tamariki and the community have told us that they want.

### Whānau area

Informed by Taitamariki and community workshop held 31st January 2020

### Exercise zone

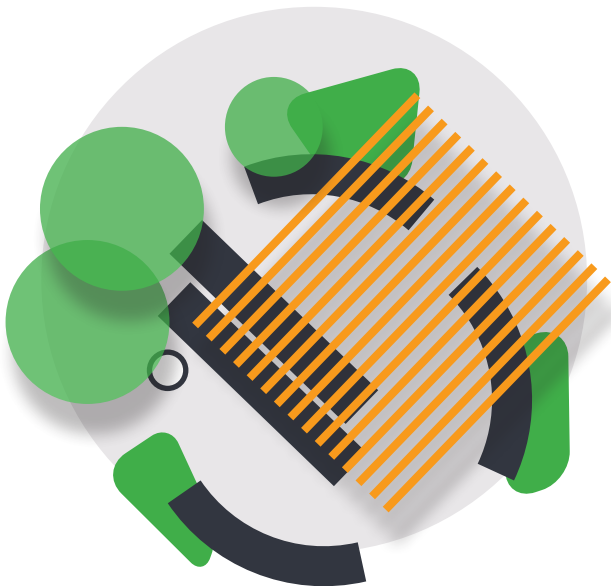
Informed by sports leaders and tamariki hui held 16th June 2020

### Learn-to-ride area

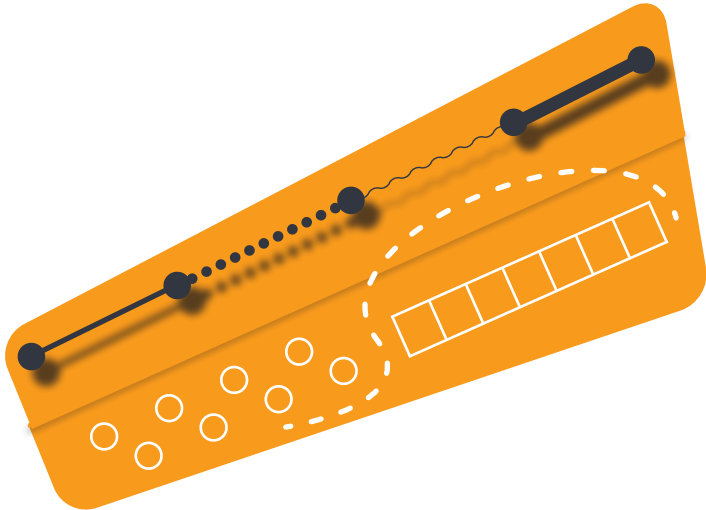
Informed by tamariki workshop held 31st July 2020

### Other landscape works

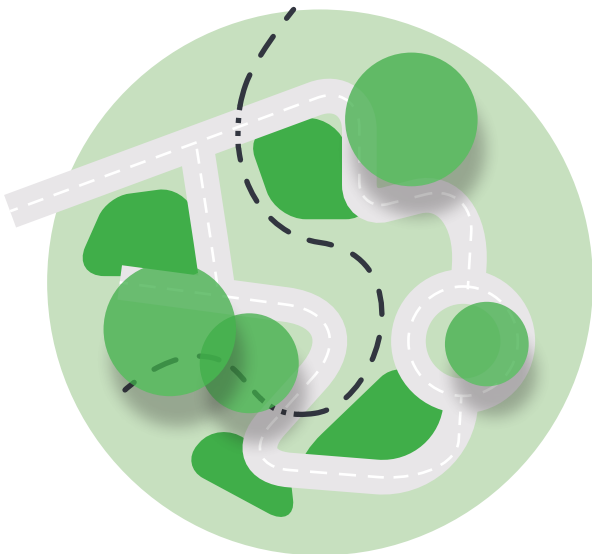
Consultation as required. FNDC input needed into wharepaku location and design.



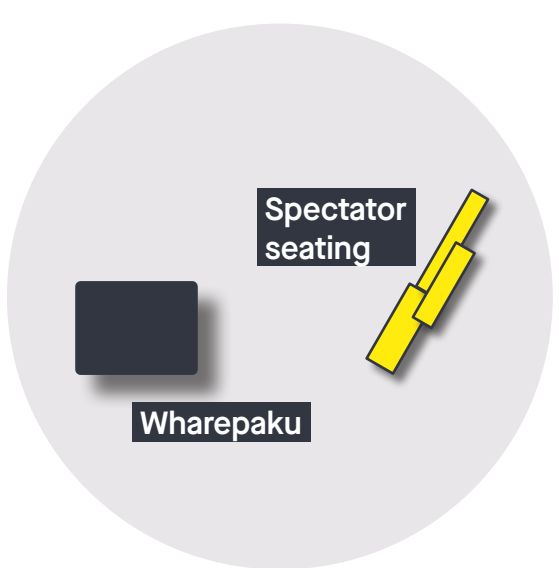
- shade structure
- lighting
- BBQs
- seating and tables
- planting
- open space
- bins and drinking fountains



- flexible and robust
- accessibility
- for all the whānau
- playfull
- sculptural
- simple elements
- ball screen



- environmentally themed spaces
- lighting and structures
- natural landscaping
- represent whakapapa of area
- different skill levels



- Wharepaku location and design
- soft landscaping: trees and planting
- drinking fountains, bins
- bench seating
- lighting
- improve paths and entrances



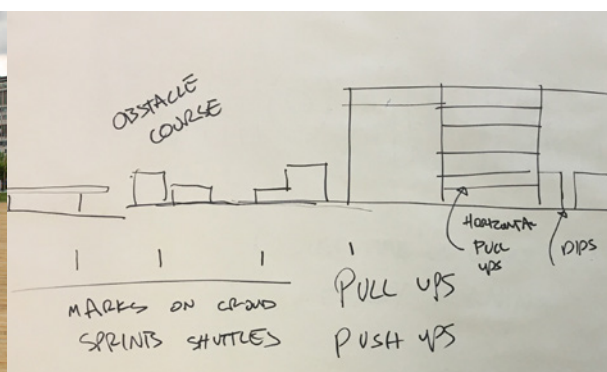
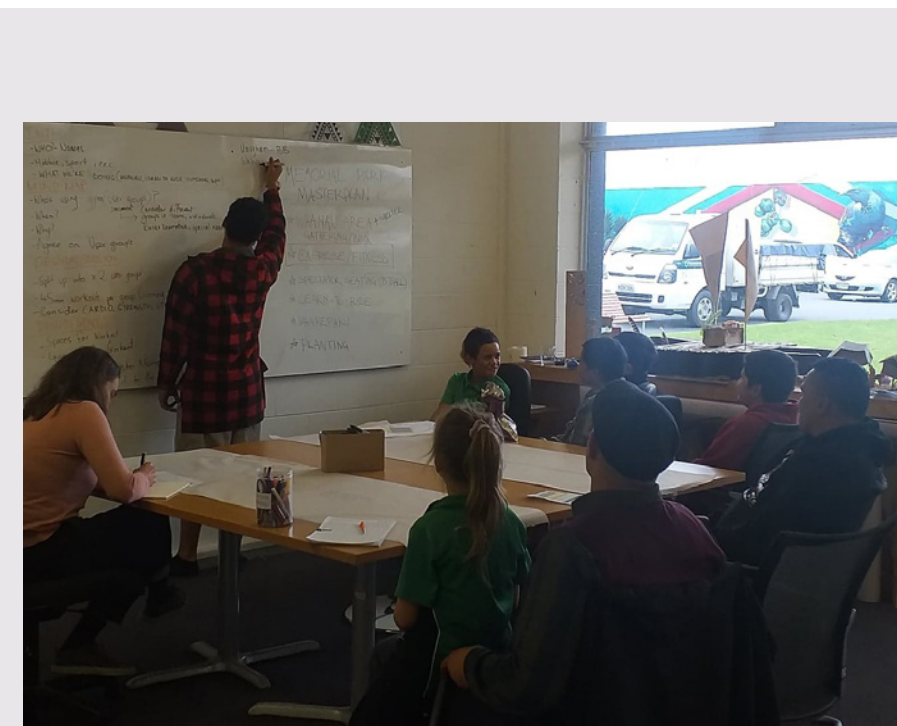


# Tamariki workshop: exercise zone

## Process

A workshop with sports leaders and tamariki from the Kaikohe East basketball team to discuss aspirations for an exercise zone.

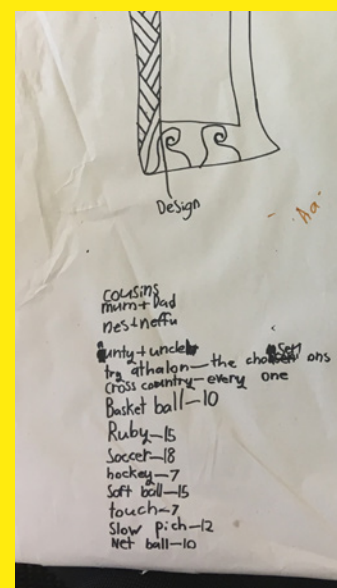
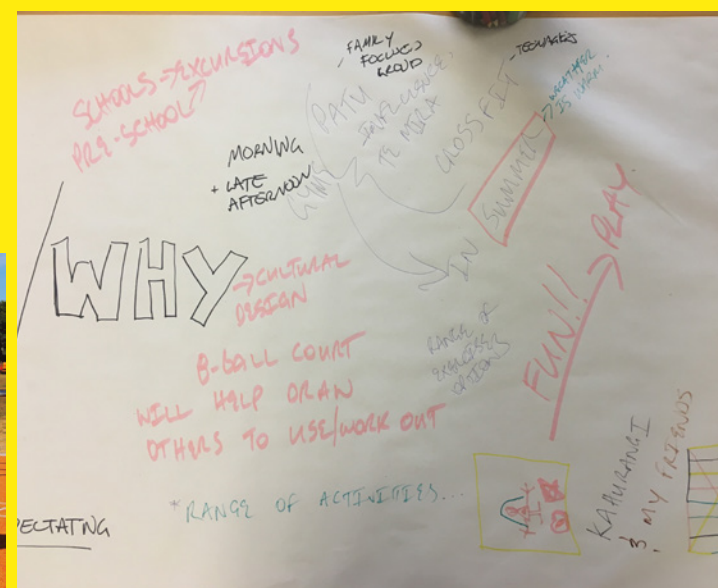
Participants designed a 45 minute workout and considered equipment and spaces that could facilitate that in Memorial Park.



## Outcomes

Key concepts and ideas are being used to drive the design of the exercise zone

- › simple and robust structures; no complicated equipment too complicated
- › an emphasis on play - something like an obstacle course
- › fitness for all the whānau and a range of abilities
- › bright colours, curving shapes, no straight lines!
- › integrate into a basketball screen





# Tamariki workshop: learn-to-ride space

## Process

2x tamariki workshops, one with Kaikohe East School and one with Te Kura Kaupapa Māori o Kaikohe.

Tamariki designed and built to-scale models of learn-to-ride tracks. in the design process, they considered:

- › conceptual kōrero and whakaaro
- › unique design elements
- › integration into the landscape
- › fun and educational spaces for tamariki and community



## Outcomes

Key concepts and ideas are being used to drive the design of the learn-to-ride space. These include:

- › interactive components throughout the bike track such as tunnels bridges, ramps, or mounds
- › incorporating lights into the track itself
- › expressing themes in spaces in and around the track, e.g. different environments
- › Ahu whenua consideration to symbolize maunga, awa, moana etc.
- › including elements such as waka and whare whakairo to represent whakapapa of the area
- › natural landscaping



# Phase 2: design development

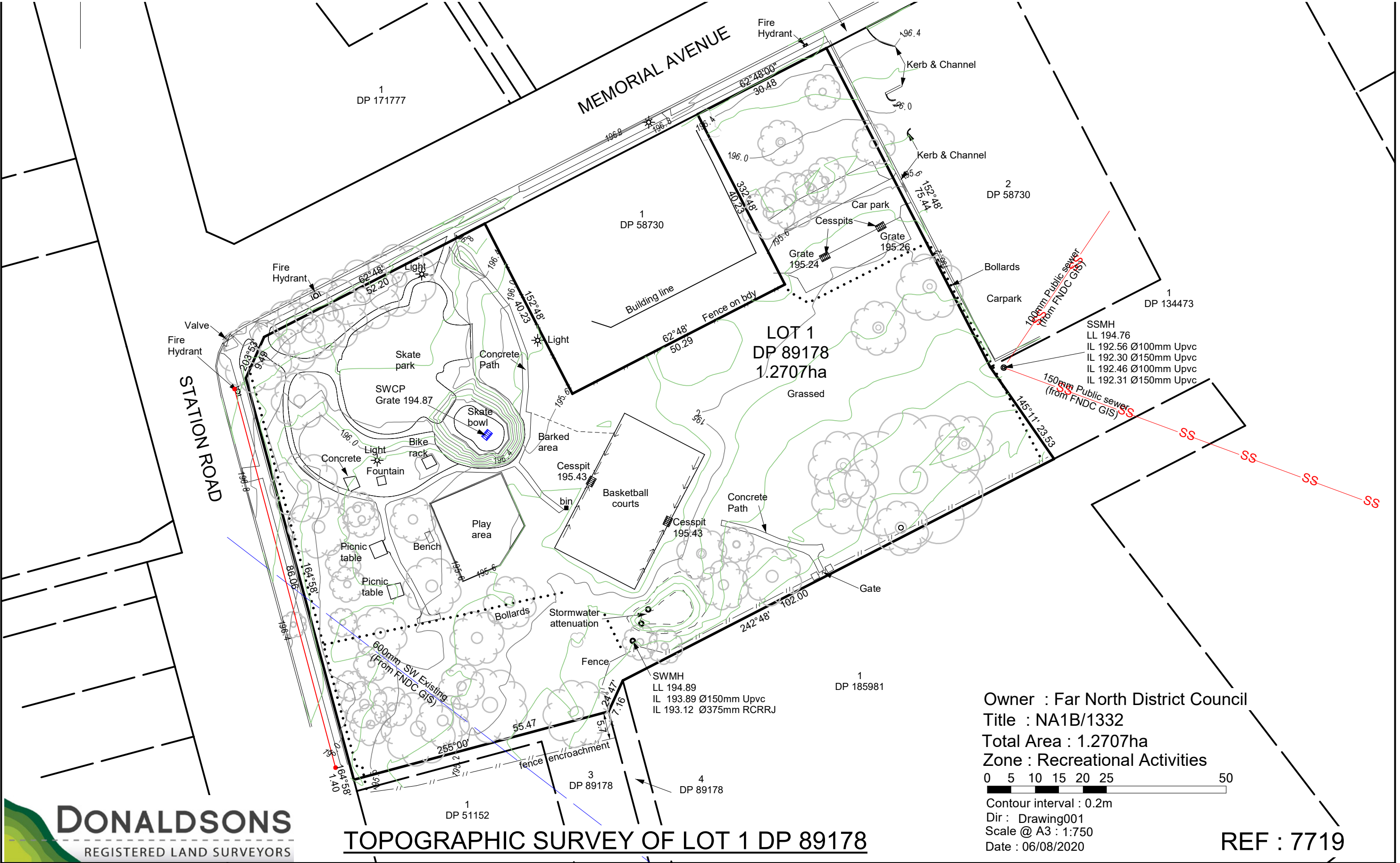
## Phase 2 included...

- › Site survey to ensure accurate landscape design.
- › Masterplanning: taking a strategic approach that considers the whole of Memorial Park and how it might develop into the future.
- › Developing design of whānau area, learn-to-ride, exercise zone, spectator seating and wharepaku so that it works with the site and responds to tamariki and community input.

**ÄKAU**

# Memorial Park site survey

Completed by Donaldsons Land Surveyors in July.



# Memorial Park: new spaces connected together

## Whānau area

- › located near Station Road. Overlooking the playground and proposed learn-to-ride area. Views to skate park and learn-to-ride
- › includes new shade structure, BBQ area, native planting, long communal picnic table (wharekai-style!), and bench seating

## Proposed wharepaku location

- › near Station Road so that it connects to potential new cycle connection
- › visible and safe from the street
- › Integrated with new entrance, including signage, path, bike racks, planting and lighting

## Proposed Station Road Cycleway

- › Separate proposal by ĀKAU to create on-road cycleway connecting Pou Herenga Tai cycle trail to Broadway.

## Learn-to-ride area

- › a mix of elements to build tamariki cycling confidence
- › uses existing landscape features
- › integrated into exercise zone, whānau area and possible 'loop path'
- › landscaping around cycle track to include nature play and off-road bike skills features

MEMORIAL AVENUE

## the 'loop path'

- › a generous concrete path circumnavigating the park
- › connects up new and existing spaces, as well as park entrances
- › provides recreation: can be walking/running track
- › allows for future development of play and skate areas

Skate park - future redevelopment?

Playground - future redevelopment?

Spectator seating framing BBall court

Improve path link to Pioneer Village

## Exercise zone

- › to be integrated into a ball screen
- › overlaps with learn-to-ride track and potential 'loop path'
- › exercise/play obstacle course wraps around learn-to-ride track - natural elements such as stepping stpnas, jumping logs

north ↑

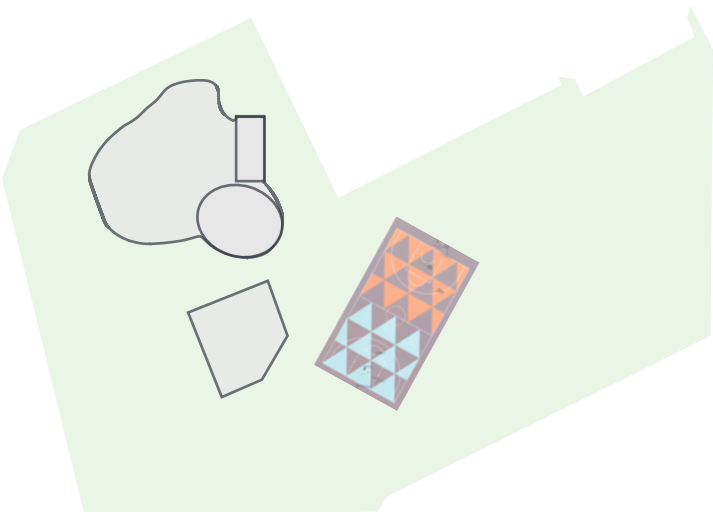
scale  
1:500 @ A3



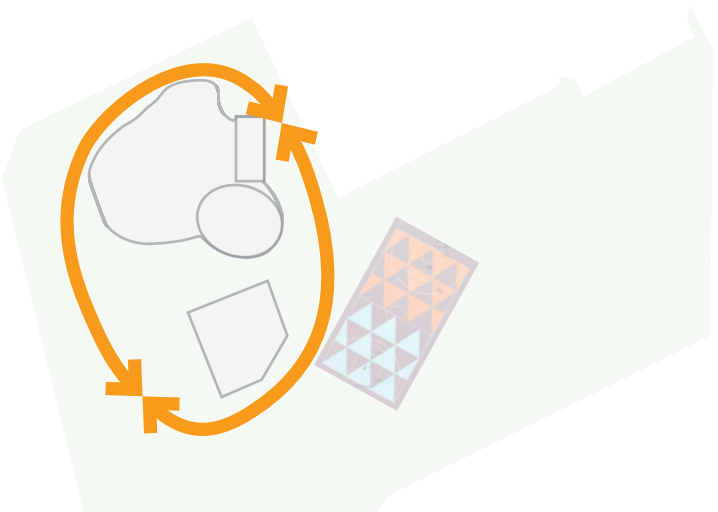
# Memorial Park Masterplan: ‘loop’ path concept

A concept-led approach to Memorial Park provides a long-term vision and ensures that the new spaces are future-proofed for ongoing development.

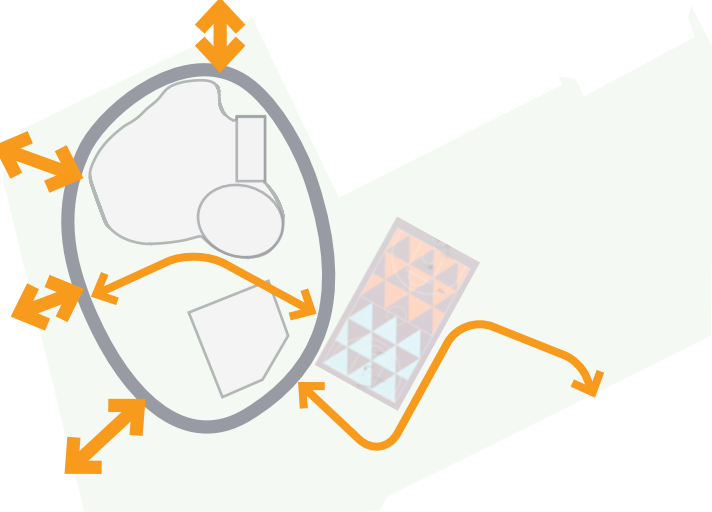
Disconnected spaces...



loop around and link...



arrive and connect...



+ new spaces.

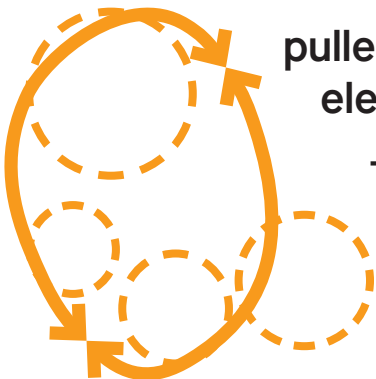


Te Ara Porohita?

A ‘sticky’ path

pulled towards existing  
elements

+ new spaces hang off it



who will use it?

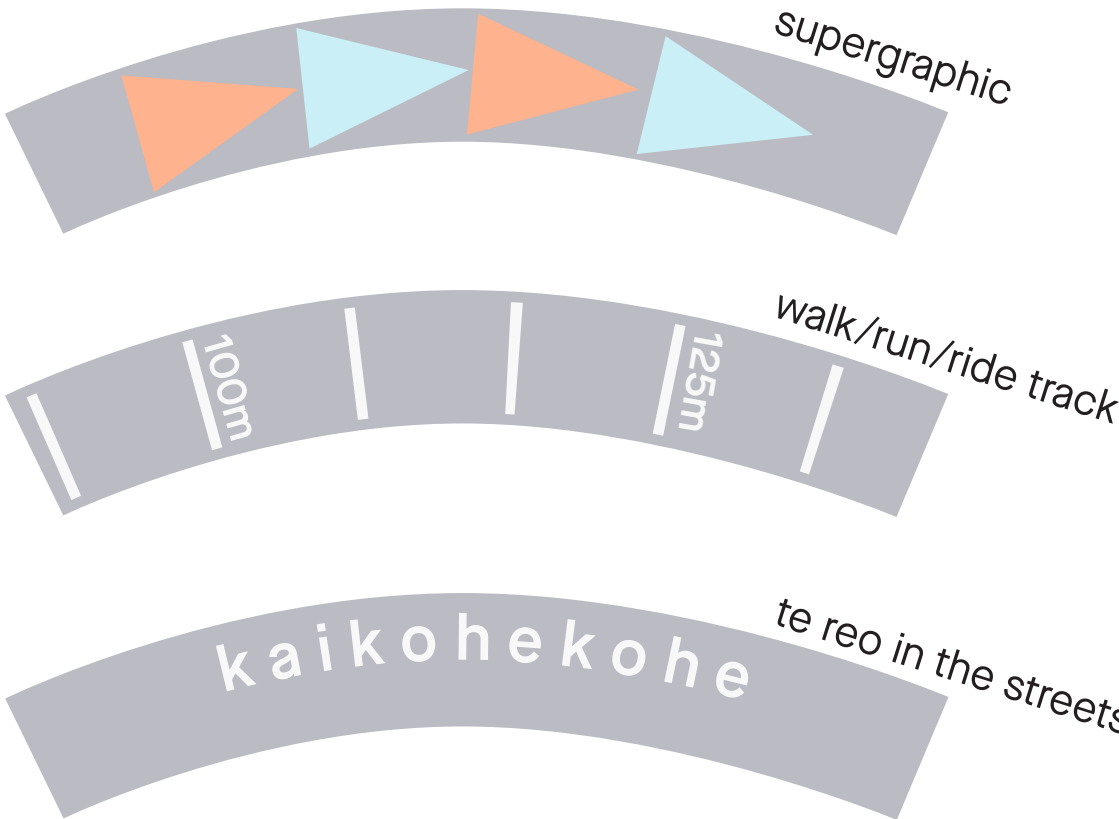
- ride a bike/scooter/skateboard
- walk, jog, sprint
- meander
- push a pram
- wheel a wheelchair

**awhiawhi** // embrace, surround

**tūhono** // join, attach, bond









**whanaungatanga** // connection, relationship

ara porohita/loop path design opportunities



# Memorial Park: masterplan design detail

## New surfaces and elements

Key	Item description
<b>Surfaces</b>	
	Limechip
	Concrete - 4kg Oxide, exposed aggregate with shell
	Concrete - 1kg oxide, broom finish
	Learn-to-ride track. <b>Refer pages 13-15</b>
	Softfall surface, patterned
	New planting: native shrubs, grasses, flaxes, ground covers
	Re-contouring required to reduce steepness of path
<b>Furniture</b>	
1	Picnic tables: 1no. standard, 1no. custom double-length.
2	2no. BBQ with custom 3m bench
3	Bike racks. Group of 4
4	Drinking fountain.
5	Bins. 1no. recycling, 1no. general.
6	Bench type 1: custom angled timber bench approx 3m long 0.8m wide. 5 no. total
7	Bench type 2: custom two-tier timber spectator bench, 4m long x 1.1m wide. 5 no. total
8	Entrance signage. 3no. total
n/a	Lighting: allow 5no. new light poles
<b>Structure</b>	
9	Basketball screen and exercise structure. <b>Refer pages 16-17</b>
	New wharepaku. <b>Refer page 18</b>





# Memorial Park proposed learn-to-ride: concept and kōrero

## A haerenga that allows for learning, exploration and play.

The learn-to-ride path weaves between existing trees, connecting the whānau BBQ area with the exercise zone. The curving path is designed like a real road system, and with plenty of space for Tamariki to practice their bike skills, learn basic road rules, and get used to cycling around others.

### Learning important cycling skills

Skills involve:

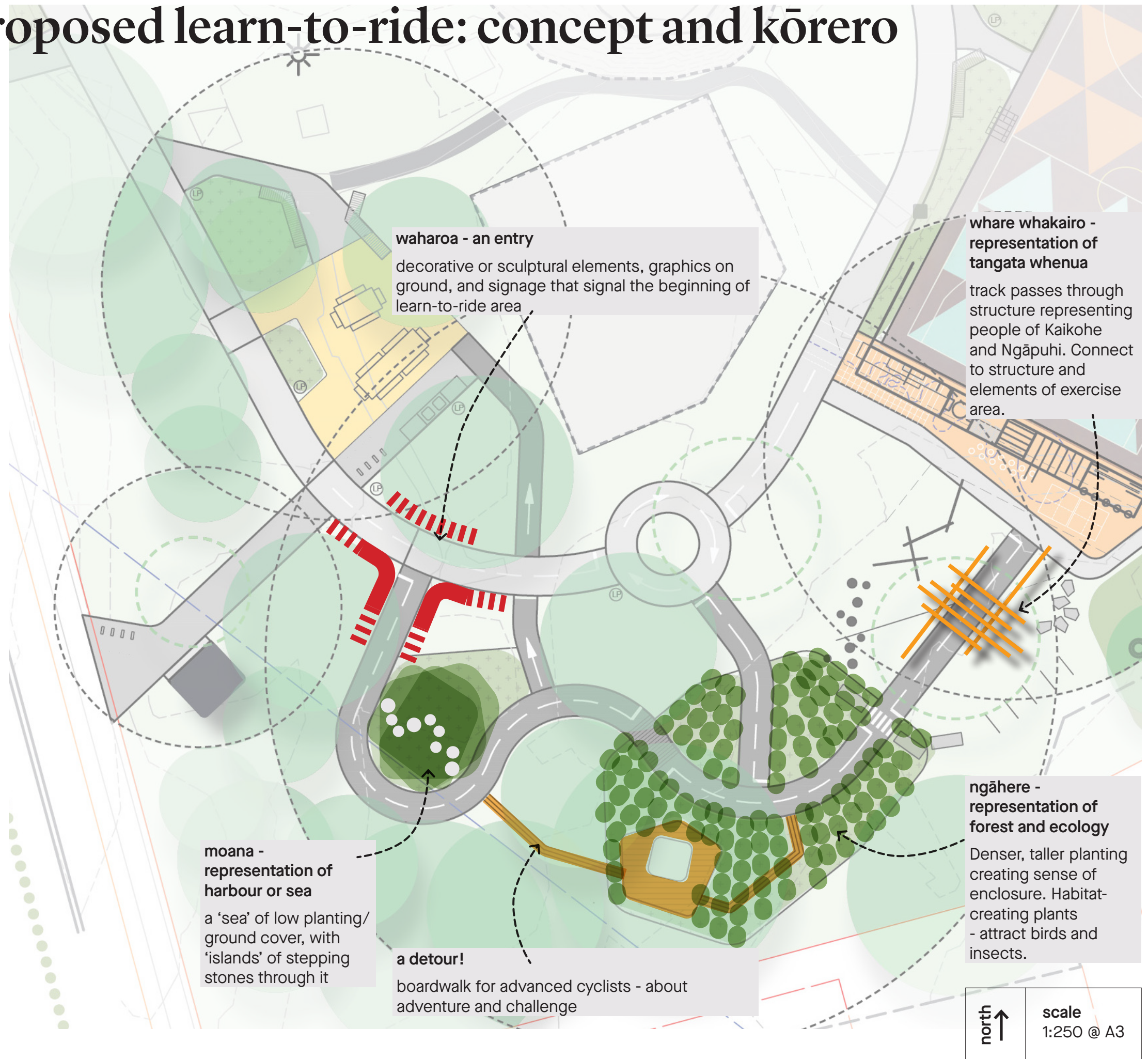
1. give-way intersections,
2. one-way and two-way roads,
3. a roundabout,
4. a pedestrian crossing,
5. a ramped bridge,
6. navigating bends and straight stretches,
7. and balancing on a narrow boardwalk.

### Representing Kaikohe stories

Landscaping around the path creates unique spatial experiences: tamariki will cycle through different 'worlds' on their journey, and encounter stories about Kaikohe and its Tūpuna.

### Increasing native habitat in Memorial Park

Memorial Park has 30+ mature trees, most of them exotic. Planting areas in the proposed learn-to-ride track introduce locally sourced, native plants to the park, increasing habitat for birds and insects. Native plants of different scale and type are used to create new and exciting spatial experiences within the learn-to-ride track. Tamariki will be engaged by the natural environment as they explore the path.



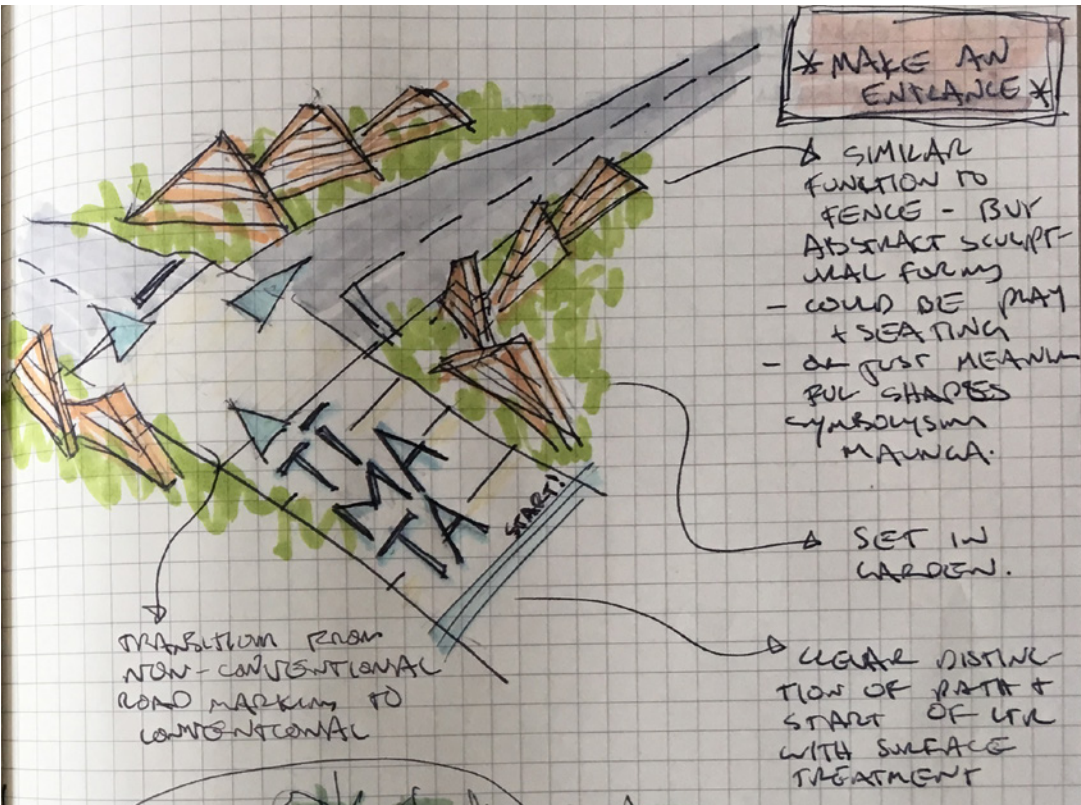
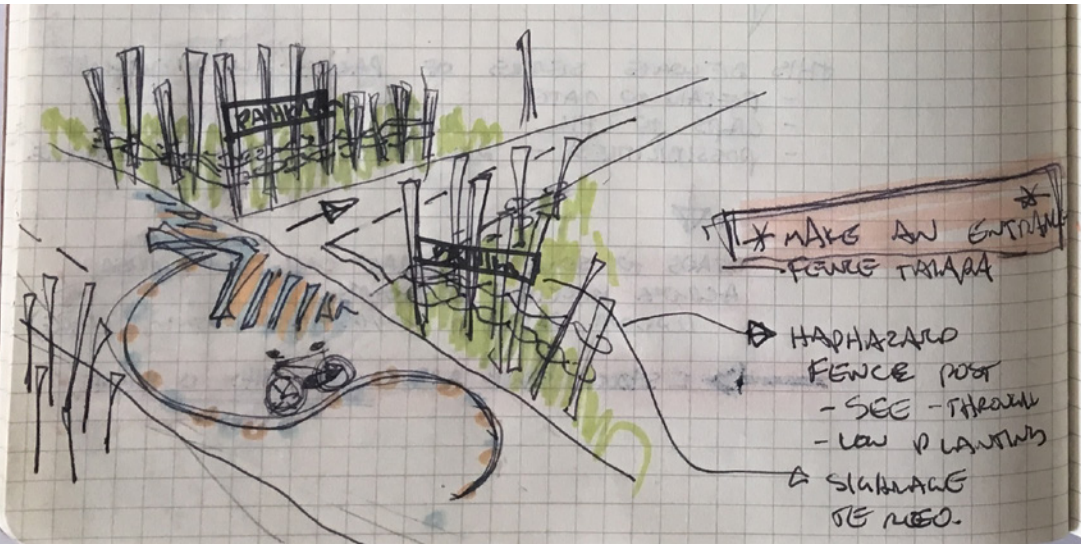


# Memorial Park proposed learn-to-ride: sketch ideas

These spaces could be developed in collaboration with taitamariki, community and local artists, from concept design to construction.

an entry - waharoa

decorative or sculptural elements, graphics on ground, and signage that signal the beginning of learn-to-ride area



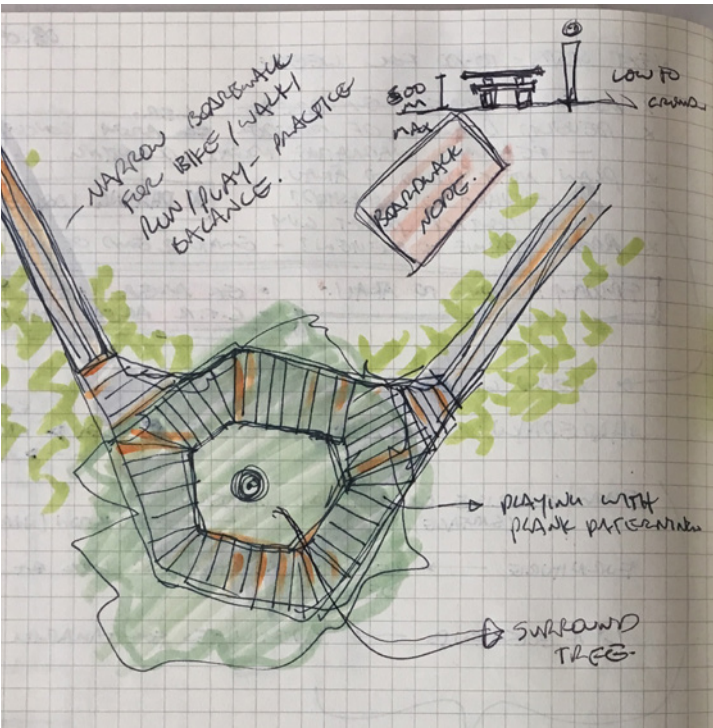
ngāhere - representation of forest and ecology

Denser, taller planting creating sense of enclosure. Habitat-creating plants - attract birds and insects.



a detour!

boardwalk for advanced cyclists - about adventure and challenge



## design precedents - nature play in Pōneke and Tāmaki

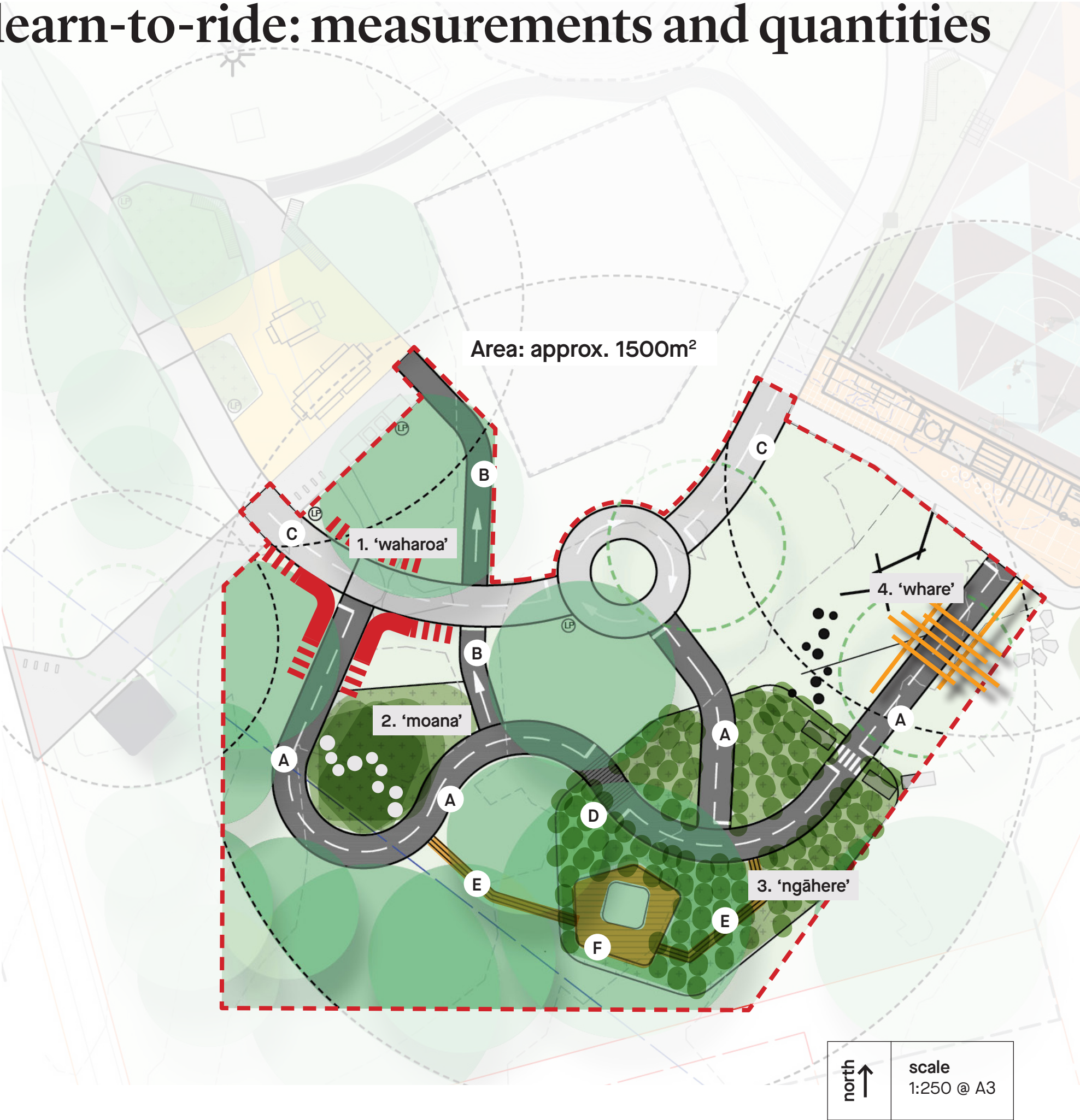




# Memorial Park proposed learn-to-ride: measurements and quantities

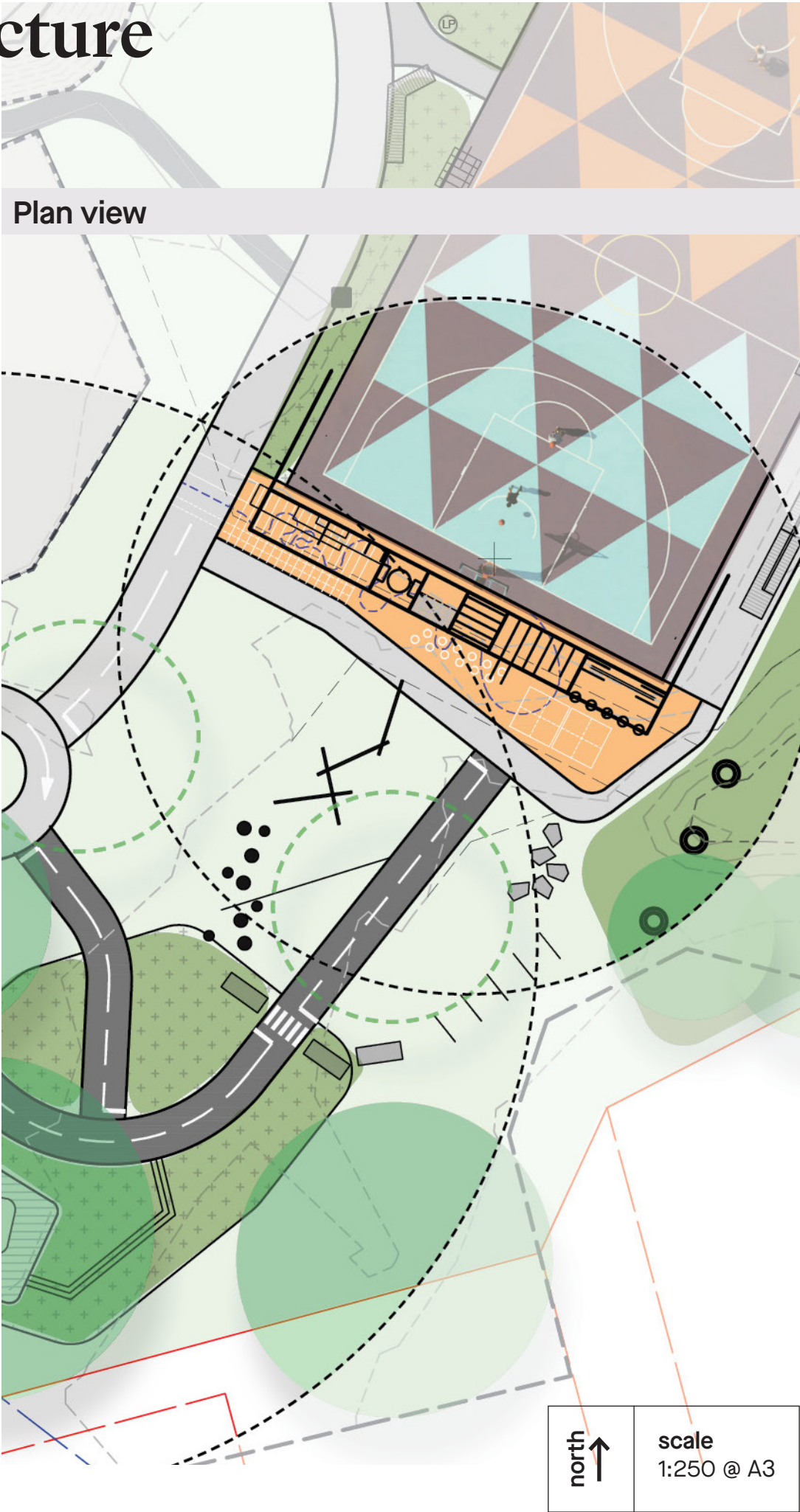
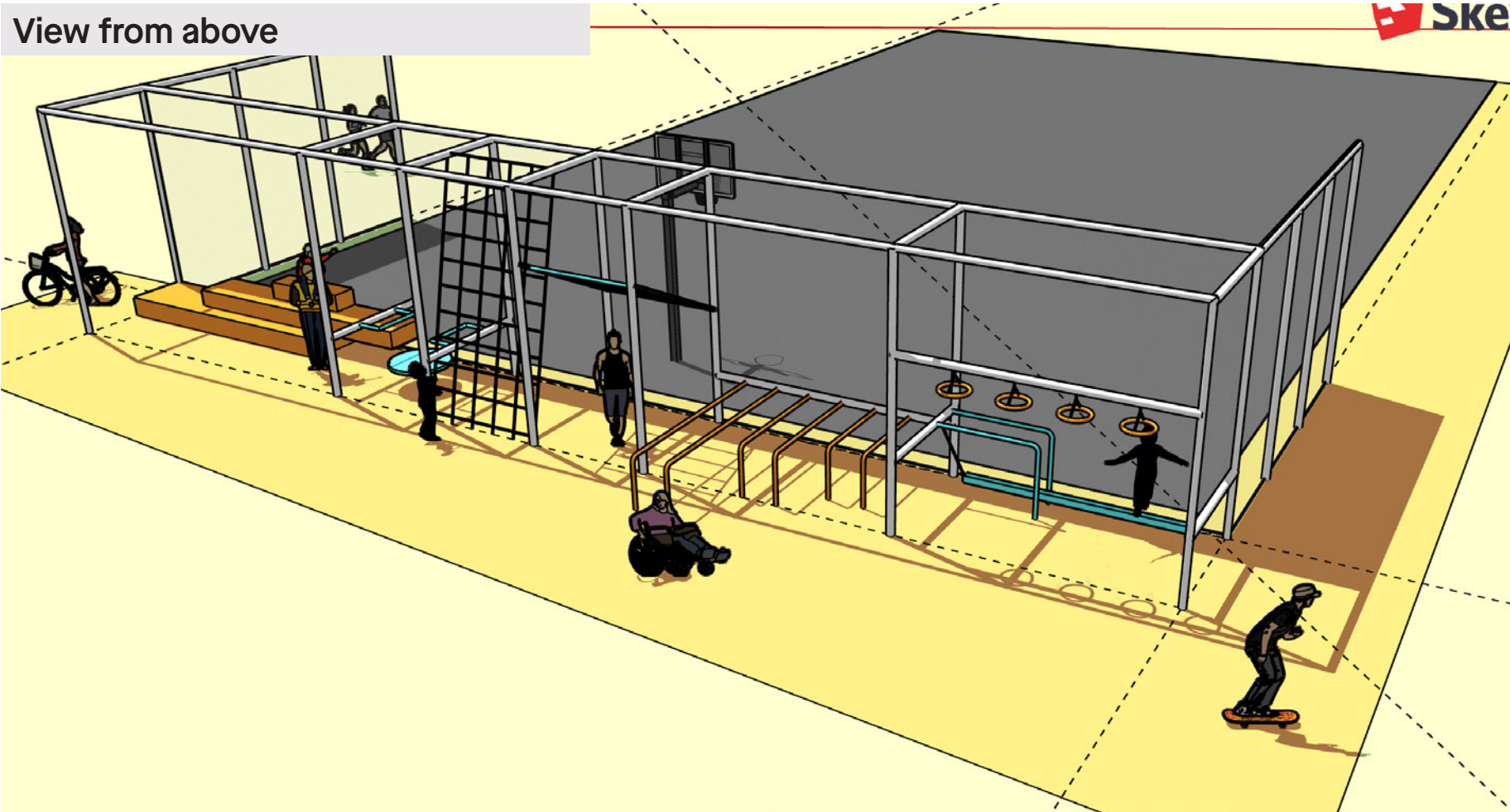
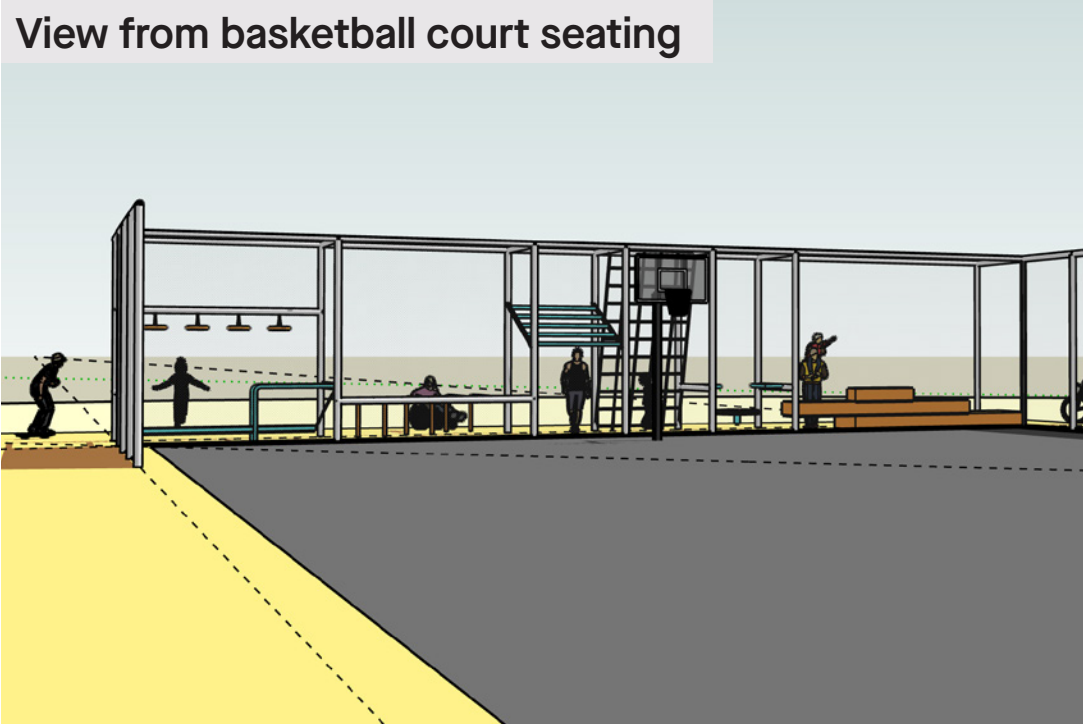
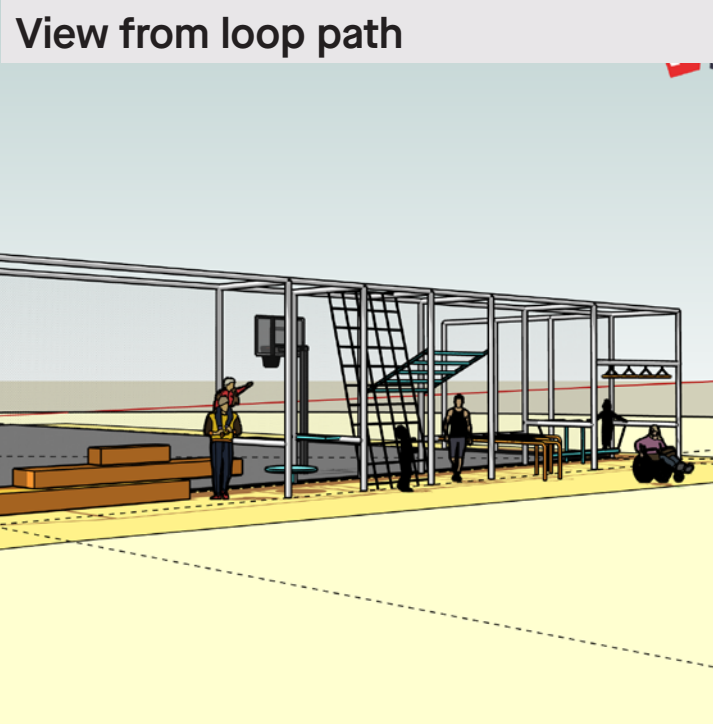
## Measurements and quantities

	Item description	quantity (no.)	length (m)	area (m2)
	<b>Contractor build</b>			
A	Cycle track - asphalt, 1.8m wide, 0.1m concrete edge beam both sides. OR 2m wide concrete, high oxide, exposed aggregate		81	
B	Cycle track - asphalt, 1.3m wide, 0.1m concrete edge beam both sides. OR 1.5m wide concrete, high oxide, exposed aggregate		22	
C	Cycle track - concrete, 2.5m wide (part of loop path), including roundabout		48	
	Resin/paint road markings and graphics on cycle track		150	
D	Timber boardwalk 1 (in main track): 2m wide short ramped boardwalk		3	
E	Timber boardwalk 2 (balance track): 0.5m wide boardwalk through trees		21	
F	Timber decking: 'island' around tree.			22
	<b>Potential community build elements (koha of time and some materials)</b>			
	Planted area A ('Moana' space) - low shrubs, stepping stones			66
	Planted area B ('Ngāhere' space) - tall shrubs, flaxes			244
	Waharoa - entrance feature fencing		x	
	Ngahere space sculptural elements - i.e. Pou	3		
	Whare whakairo sculptural structure	1		
	<b>Signage project - seperate ĀKAU-run papamahi?</b>			
	Cycle track signs (miniature road sign style signage)	10		
	Information signs	4		



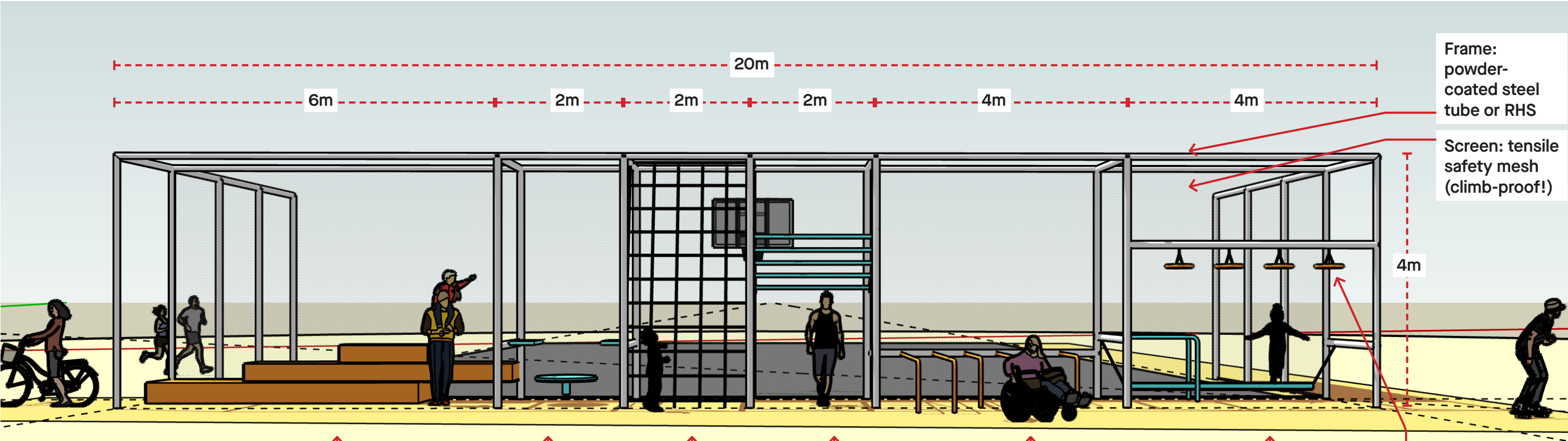


# Memorial Park proposed exercise zone: structure





# Memorial Park proposed exercise zone: detail



## Steps

- › Range of heights
  - › Jumping, stepping, balancing, stretching
  - › Include handrails - for koroua/kuia to practice stairs and sit up/down movements
  - › Can also be used as bench seat
- \*\* need to check heights appropriate (currently too high in model)\*\*

## Balance platform

- › OR in-ground trampoline??
- › Balancing, wobbling
- › Include handrails - to allow for range of abilities

## Climbing net

- › 4m tall, slightly angled
- › Easy climb: front side
- › Difficult climb: inverted slope, back side

## Pull-up bars

- › Spaced apart, 5 different heights
- › Pull-up, swing between, hang off

## Dip bars

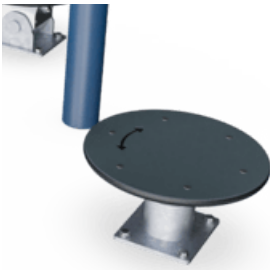
- › dips, press-ups
  - › Pairs of them @ different sizes
- \*\*can they be multi-functional?? Or include another element here?\*\*

## Balance beam

- › hanging timber beam
- › Play and balance/strength skills
- › Include handrails - to allow for range of abilities

## Turbo challenge

- › Play and strength
- › Pull-up, swing between, hang off





# Memorial Park proposed wharepaku: detail

## Location plan

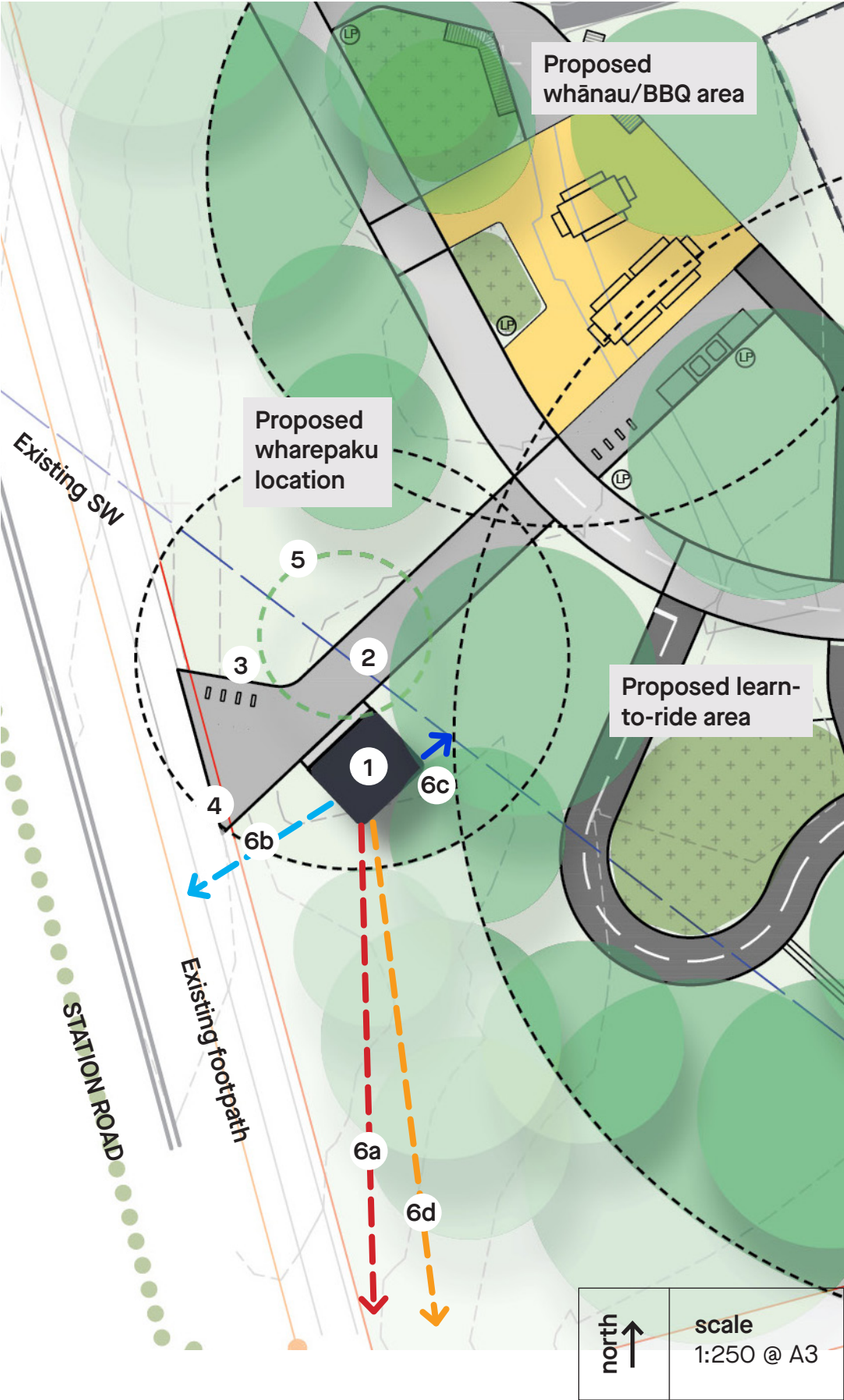
### Legend

- 1. Wharepaku building near Station Road.** To include lighting and decoration to exterior walls. Low native planting around south and east sides of building. Approx. elevation at this point is 195.75m.
- 2. 2.5m wide concrete entrance path** connecting Station Road footpath, Wharepaku, and proposed new whānau spaces
- 3. 4 no. bike racks**
- 4. Navigation signage** directing cyclists to wharepaku, Memorial Park, and Broadway
- 5. Tree to be removed**
- 6. Potential service connections?** (to be investigated)
  - 6a. Power** to existing power box in SE corner of park
  - 6b. Water** to existing main in street
  - 6c. SW** to existing adjacent SW line
  - 6d. Sewer** to manhole at 34 Station Rd

### Notes

All trees shown are existing. Trees removed/retained to be considered in relation to survey and review of quality/species.

Wharepaku building footprint is drawn at **3075mm x 3675mm** as per the design proposed by **Arcline Architecture** in the Building Consent document 'Kaikohe Memorial Toilets (BC Set) (20-02-20). pdf'.



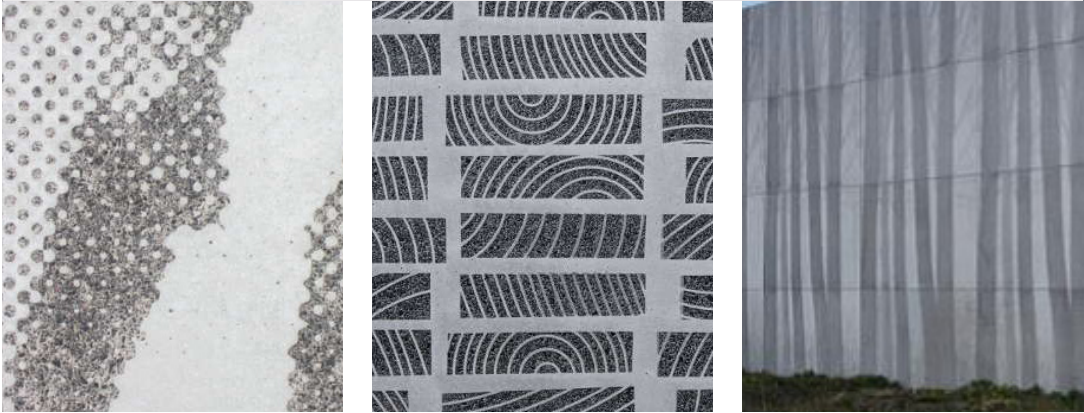
## Wharepaku building - design detail

ĀKAU proposes enhancing the visual impact of the wharepaku building through simple exterior decoration. Patterns that reference Kaikohekohe stories will help to make the wharepaku a positive and visually appealing addition to Memorial Park.

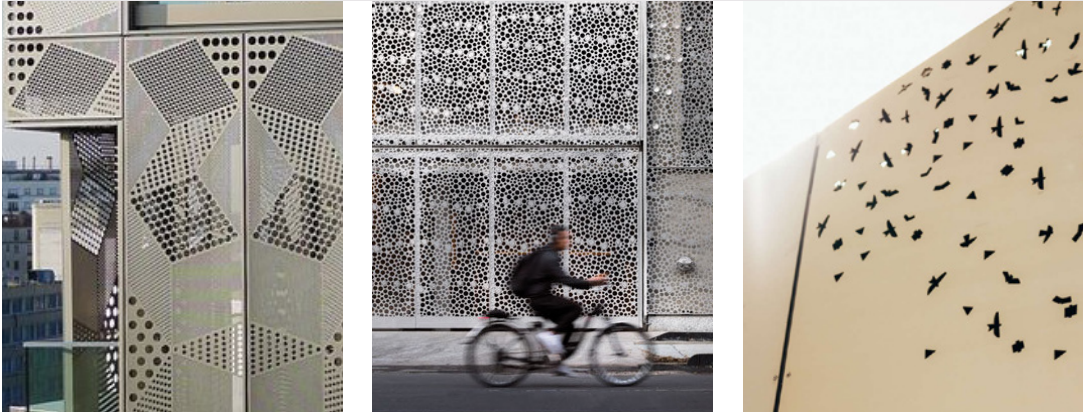
### Colour and formwork



### Sandblast/precast pattern in concrete



### Perforated steel screen





# Memorial Park future works: playground redevelopment

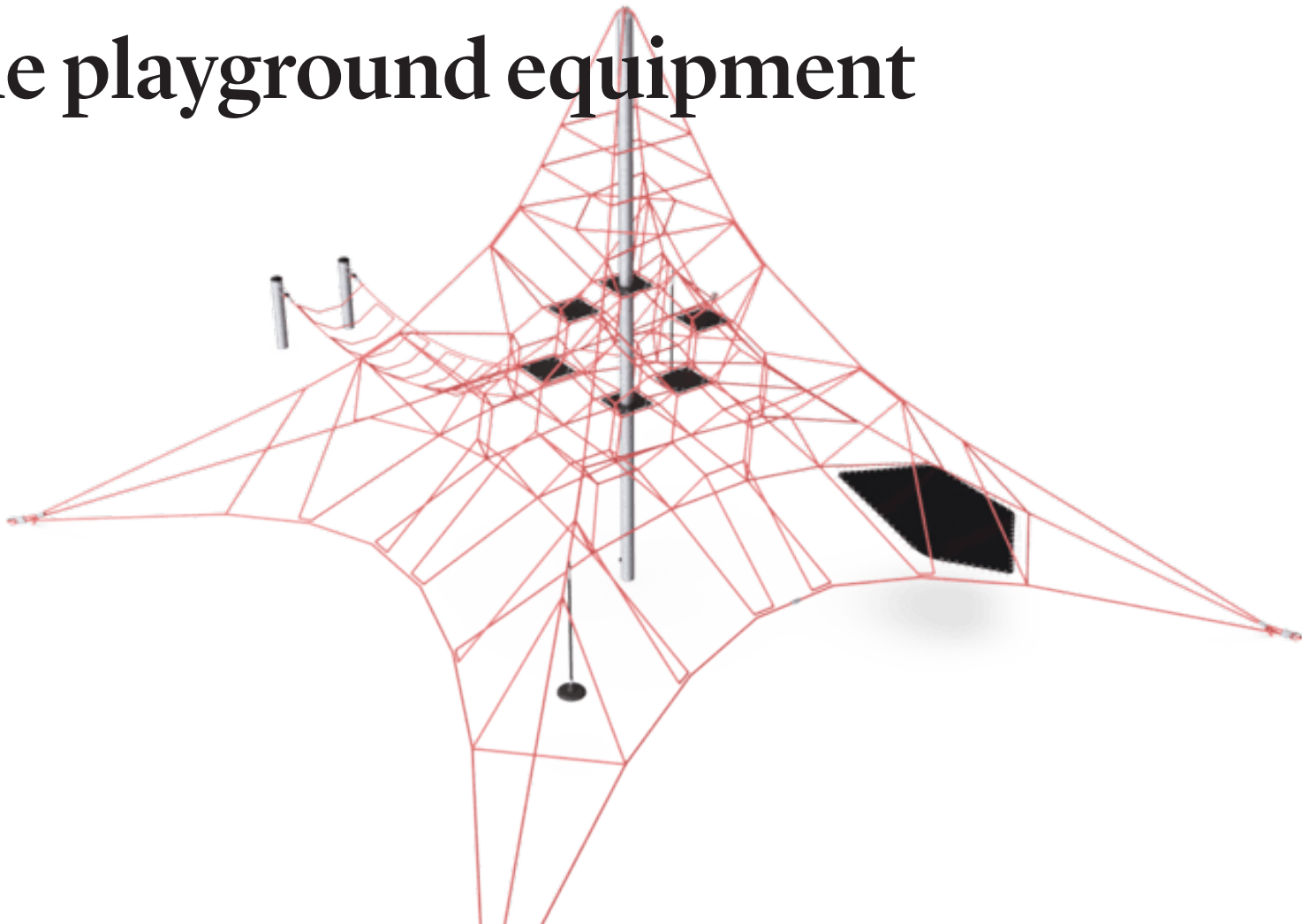
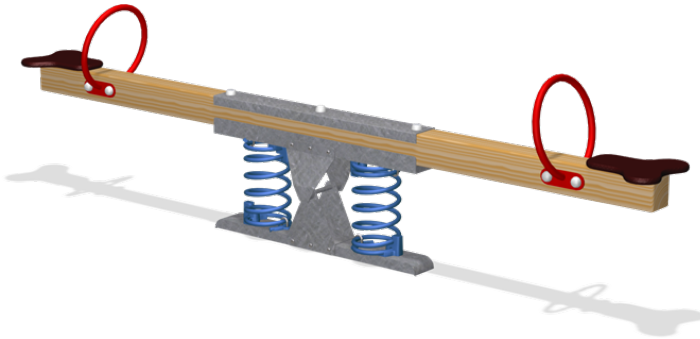
A play space that provides for younger and older tamariki, integrated into the Memorial Park landscape.

- New pathway**
- › Connect through play spaces from whānau area to Basketball/exercise zone
- Beginner play**
- › Safe play elements for younger tamariki who are learning about the world around them
  - › Right next to whānau area for easy supervision
  - › Allow for shade structure (i.e. shade sails)
  - › Softfall surface (bark or similar)

- Planting**
- › Green thread through middle of play space - shrubs, grasses, flaxes, groundcovers
  - › Allow 3 new specimen trees
- Advanced play**
- › Challenge for older tamariki
  - › adaptive re-use of skate bowl
  - › Visual connection to activity on Basketball Court and Skate Park
  - › Softfall surface (bark or similar)



# Memorial Park future works: example playground equipment



BEGINNER PLAY >>> ADVANCED PLAY





# Where to next?

## Detail design, phasing and construction drawings

- › Continue developing design detail, including: furniture, structures (shelter, basketball screen) planting and landscaping, materiality. Opportunity for more taitamariki input!
- › Finalize wharepaku location, investigate customization options. Opportunity for taitamariki input!
- › Tree assessment: determine which trees could be removed, and where natives can be planted instead.
- › Construction drawing package and cost assessment for construction.
- › Resource consents and building consents as required.
- › Staging and long-term strategic plan for Memorial Park!

