



27 September 2020

«AddressBlock»

Vodafone Network Upgrade
Vodafone reference: Matauri Bay (N1MBY)
Whakarara Quarry Reserve

«Title»

Vodafone has a telecommunication facility located on land controlled by the Far North District Council, on the hill at Whakarara Quarry Reserve, off Whakarara Road, Matauri Bay. The facility consists of a 16m high mast with antenna and associated radio equipment attached at the top as shown on the attached plans.

The facility has operated in the current location for approximately 20 years, and provides mobile calling, text, 4G data and wireless broadband services to the Matauri Bay community and surrounds. Vodafone have requested an extension of the agreement with the Council for the tower to remain in its current location for a further 10 years, to ensure the continuation of these services to the community.

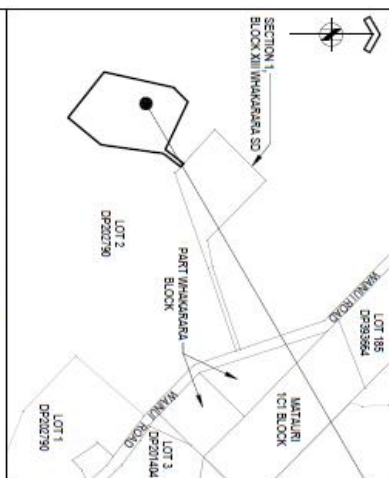
As part of the discussions with Council, the local community board has requested that Vodafone notify nearby residents of the intention to extend the agreement and answer any questions that may arise.

If you have any queries about the facility or Vodafone's services, please feel free to contact me at paul.kinghan@vodafone.com.

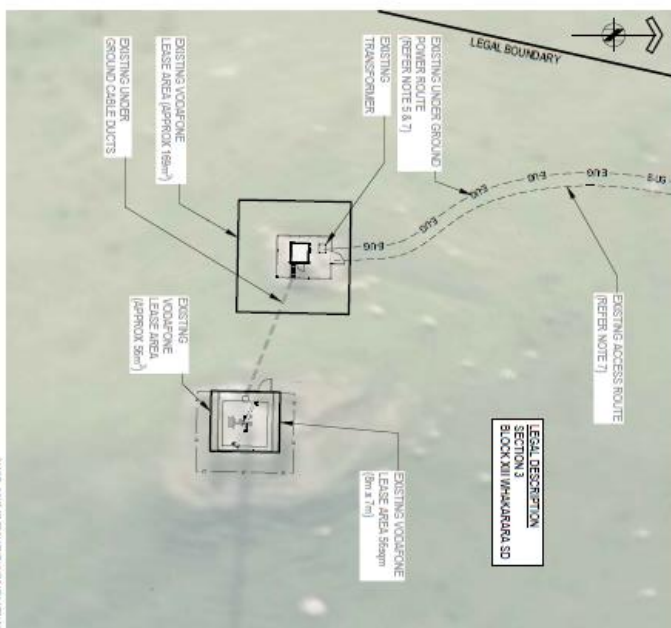
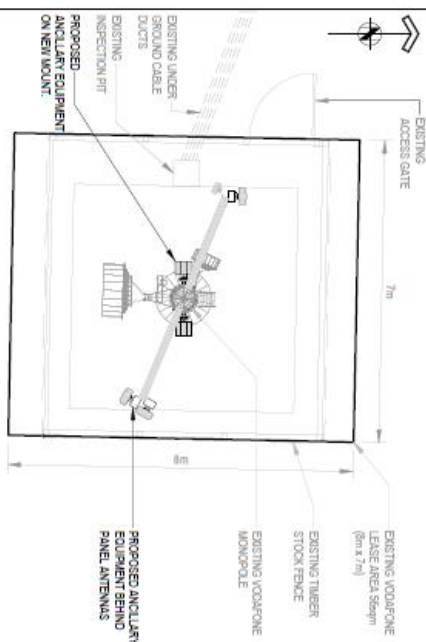
Kind regards,



Paul Kinghan
Site Acquisition Manager



SITE
SECTION 3
BLOCK XIII WHAKARARA SD
N: 6683663 (NZMG)
E: 2591949 (NZMG)



1. ACCESS TO SITE FROM MAIN ROAD AS SHOWN.
2. THE NORTH POINT IS INDICATIVE ONLY.
3. BUILDINGS, SERVICES AND DISTANCES SHOWN ARE APPROXIMATE AND SUBJECT TO SURVEY. LEVELS GIVEN ARE FROM GROUND LEVEL, AND ARE APPROXIMATE ONLY.
4. ALL EXISTING SUPPLIES AND FEATURES SHALL BE FULLY REINTEGRATED TO THEIR ORIGINAL CONCEPTION.
5. EXISTING SERVICES INFORMATION HAS BEEN OBTAINED AND PLOTTED FROM LOCAL AUTHORITY AND SERVICE PROVIDERS RECORDS. WHILE EVERY EFFORT HAS BEEN MADE TO OBTAIN ALL KNOWN SERVICES, THE PROJECT HAS NOT BEEN CONFINED TO SITES. ANY CHANGE TO EXISTING SERVICES SHALL BE MADE GOOD AT THE CONTRACTORS DISCRETION.
6. ROUTE TO BE CONFINED FOR POWER AND TELECOMMUNICATION ROUTE.
7. REFER TO ROADWORK STANDARD SIGNS AS REQUIRED.
8. THE WIDTH OF PROPOSED POWER, TELECOMMUNICATION AND ACCESS ROADS SHOULD BE 3m WIDE.

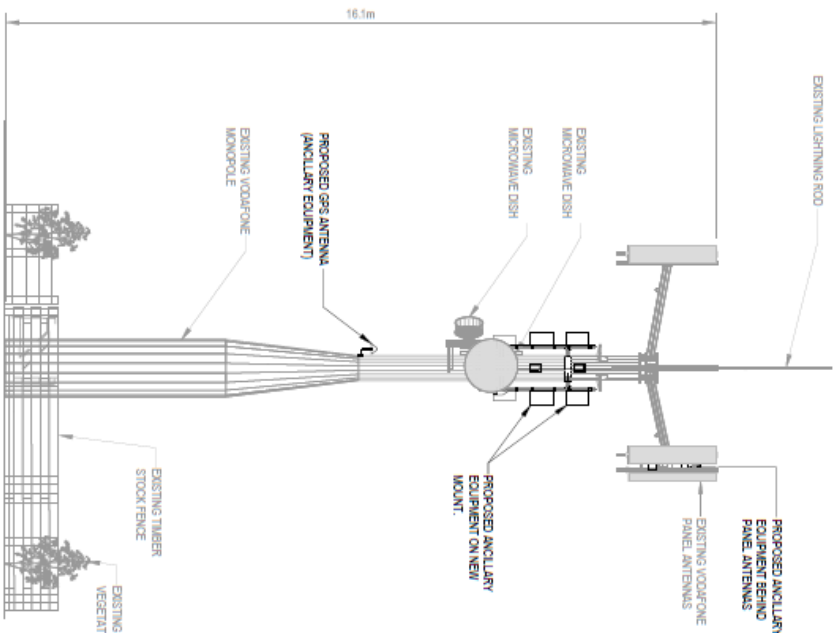
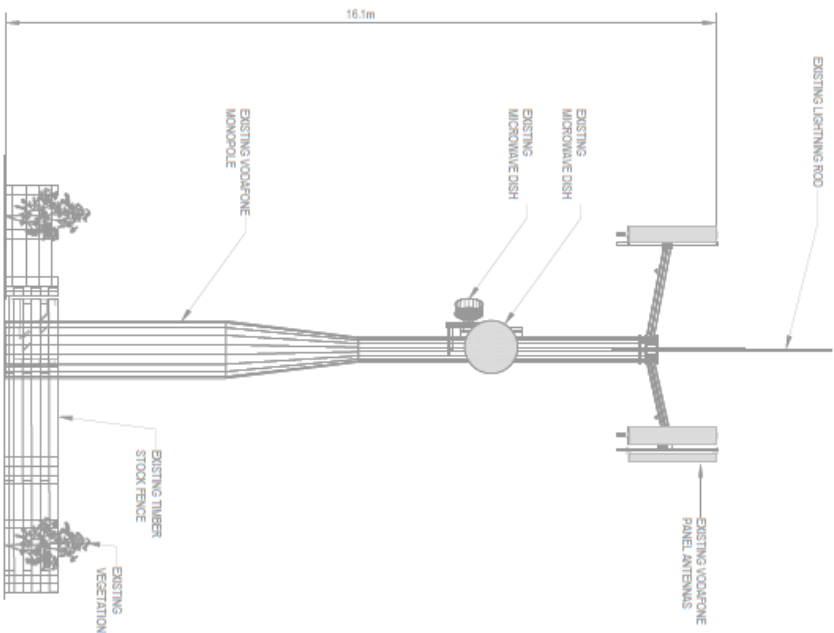


IMAGE : SOURCE FROM THE LINK DATA SERVICE

LEGEND

— P —	POWER
— T —	TELECOMMUNICATIONS
— C —	TELECOMMUNICATION - CROSSTRA
— G —	GAZ
— W —	WATER
— F —	FIREFIGHT
— E —	POWER - UNDERGROUND
— O —	POWER - OVERHEAD
— S —	STORMWATER
— R —	SEWER
— A —	ACCESS ROUTE
— L —	LEGAL BOUNDARY
— D —	DRAINAGE
— F —	FENCE

[illegible]



EXISTING SOUTH ELEVATION
1:100

PROPOSED SOUTH ELEVATION
1:100



Drawn	AS	Date	28.08.20	Project
Designed	AS	Date	28.08.20	
Checked	RT	Date	28.08.20	
Approved	RT	Date	28.08.20	
Checked	RT	Date	28.08.20	
Approved	PK	Date	28.08.20	

Drawn	AS	Date	28.08.20	Project
Designed	AS	Date	28.08.20	
Checked	RT	Date	28.08.20	
Approved	RT	Date	28.08.20	
Checked	RT	Date	28.08.20	
Approved	PK	Date	28.08.20	

Drawn	AS	Date	28.08.20	Project
Designed	AS	Date	28.08.20	
Checked	RT	Date	28.08.20	
Approved	RT	Date	28.08.20	
Checked	RT	Date	28.08.20	
Approved	PK	Date	28.08.20	

Drawn	AS	Date	28.08.20	Project
Designed	AS	Date	28.08.20	
Checked	RT	Date	28.08.20	
Approved	RT	Date	28.08.20	
Checked	RT	Date	28.08.20	
Approved	PK	Date	28.08.20	