



**Far North
District Council**



ATTACHMENTS MINUTES

**Governance and Strategic
Relationships Committee Meeting**

28 March 2019

Table of Contents

4 Tabled Documents

Attachment 1 Tabled Document - IwiHapu Relationship 3

4.2 District Strategy and Spatial Plan - project update

Attachment 1 Presentation - FN2100 presentation 7



www.fndc.govt.nz
Memorial Ave, Kaikohe 0440
Private Bag 752, Kaikohe 0440

askus@fndc.govt.nz
Phone 0800 920 029
Phone 09 401 5200

Iwi/Hapū Relationship

Governance & Strategic Relationships Committee 28 March 2019

AXXXXXX

Purpose of the Report

To update the Governance of Strategic Relationships (GSR) Committee on work completed and planned on furthering MoUs with Iwi and Hapū since the last GSR Committee meeting in November 2018.

Update on progress of the MoU with Te Rūnanga o Te Rarawa

In November it was reported that Council was waiting for the Rūnanga to request a review process. The Rūnanga requested an informal meeting that was held on 21 March 2019. The following points were discussed and noted as a way to inform any proposed review:

- The previous MoU was acceptable, however there were a number of missed opportunities historically that would have helped solidify a partnership process and response (e.g.) Kaitiaki water supply options
- "Whanaungatanga Kī Taurangi" (the Governance relationship agreement that was signed at Waitangi between the Mayoral Forum and Te Kahu o Taonui) provides a foundation to begin with and there is also the opportunity to draw from the existing MoU through the next review
- There are issues around cultural expression and the embracing of culture / language / nomenclature that will need to be considered in future developments (e.g.) the naming of Te Ahu
- Similarly Māori "names" are being lost and with it the depth and understanding (e.g.) historically a segment of Matthews Ave was previously known as Naumai Road
- This cultural expression requires a certain consciousness within Council and should be an inherent part of a collaborative relationship within a review
- Te Rarawa is not just a Treaty partner but they are also a significant ratepayer and one of the biggest farmers/forestry owners/horticulturalists and developers in the social and economic development space. Any review would seek to emphasise this position
- Council will need to be mindful that Te Rarawa trustees are apprehensive about a new MoU and a revised or revamped agreement will need to consider how marae and hapū will benefit. For example, there is an opportunity to have a principled discussion and Te Rarawa's input and participation into Councils Rating Review especially in relation to Māori Freehold Land and the non-rateability of marae
- An invitation to participate in the development of a Strategy for the District (branded FN2100) has been extended to Te Rarawa and a number of the issues raised above could be considered within an overarching strategy. Input into FN2100 will need to be completed before a Discussion Document goes out for consultation. Administration is planning to go out for public consultation on the Discussion Document in September 2019.

Next Steps

A follow up informal governance meeting is being scheduled for April 2019 to provide more shape and form to the above points especially around FN2100 and prior to the technical input of appropriate staff around the drafting of a revised or revamped MoU.

Te Rūnanga o Ngāti Hine

At the November Governance and Strategic Relationships Meeting Ngāti Hine's priority areas were reported alongside key action points in the MoU update report. Since then the Steering Group met on 12 March 2019 where a "health check" of the MoU and action plan was discussed. The following key priorities were identified with a requirement that annual resourcing needs to be jointly discussed and considered in terms of capability, capacity and funding possibilities:

1. The review of the District Plan and RMA 101 training
2. Community Planning for Kawakawa
3. Relationship meetings via workshops; and
4. A review of Ngāti Hine's Iwi Environmental Management Plan.

Also an invitation to participate in the development of FN2100 has been extended to Ngāti Hine and their input will need to be completed before a Discussion Document goes out for public consultation in September 2019.

Next Steps

A priority matrix for the above priorities is being developed with clear action points and timeframes. This will be reported on at the next Steering Group and Strategic Governance Group meeting on 11 June 2019.

Te Kahu o Taonui (Taitokerau Iwi Chairs Forum)

In November a revised MoU was considered by the Iwi and Local Government Chief Executives (ILGACE) Forum which was subsequently endorsed by Council on 13 December 2018.

This resulted in a governance relationship agreement "Whanaungatanga Ki Taurangi" being signed at Waitangi on 31 January 2019 between the Northland Mayoral Forum and Te Kahu o Taonui (Taitokerau Iwi Chairs Forum).

Signatories included Ngāti Kuri, Te Aupouri, Ngāi Takoto, Te Rarawa, Ngāpuhi, Whaingaroa, Ngāti Whātua, NRC, FNDC and KDC.

Non-signatories included Ngāti Kahu, Ngātiwai and WDC, however an inability to sign the agreement does not preclude the above parties from reconsidering their position in the future.

This agreement provides a range of opportunities by:

- Progressing a shared vision for Northland
- Considering joint ventures that deliver mutual benefits by better understanding of each other's perspectives
- Providing a uniform voice on strategic issues and more influence at the central government level
- But it does not replace the statutory powers and strategic plans of Councils or agreements between Councils and Iwi/Hapū.

Both governance parties will meet twice a year to maintain the relationship, progress mutual projects and to review the agreement.

Next Steps

A May 2019 date is currently being considered for a governance meeting. ILGACE will support the agreement from an operational perspective and will look to consider a draft work plan. A potential project being scoped is a Regional Housing Initiative which will be discussed at the next ILGACE meeting being scheduled for May, prior to the governance meeting.

Te Rūnanga o Whaingaroa (TROW)

A draft MoU was endorsed at the Committees November 2018 meeting, however the MoU is yet to be endorsed by Council. Prior to being recognised by Council, Committee representatives¹ are looking to have an informal governance meeting to discuss and understand each parties expectations and a process to move forward. Meeting dates are currently being considered by TROW

Next Steps

A meeting between the Governance Committee representatives and governance representatives of TROW once the meeting date is confirmed.

The Parahirahi Ngawha Waiariki Trust

Whilst a December 2018 workshop was held, the draft Memorandum of Intent was not discussed due to other priority agenda items.

The Trust is now considering how a Memorandum of Intent will support its aspirations from a RMA perspective, especially in lieu of their successful PGF application to redevelop the Ngawha Pools.

The Trust has commenced discussions as part of the District Plan Review and wants to consider the opportunity of developing a Māori Purposes Zone for the Pools. This process is being managed by the District Plan team who have asked to be included on the Trusts next workshop agenda.

Next Steps

The Trust is looking to workshop RMA matters in May 2019.

Te Whiu Hapū Incorporated

There are no current updates to report at this stage.

Te Rūnanga o Ngāti Rehia

There are no current updates to report at this stage.

Whangaroa Papa Hapū

There are no current updates to report at this stage.

¹ Councillors McInnes, Stratford and Hookway

What is Strategy

- District Strategy vs Council Strategy
 - They work together
 - The Far North in 50-100 years (where we are going as a district)
 - Organization Capacity (systems, process, relationships)

The District Strategy

- **Outwardly focused**
- **The long term strategic direction for the district**, the way the district operates. Where we are going matching or exceeding the life expectancy of District assets/challenges we can foresee.
- **Addresses risks**, such as challenges of land assembly, rapidly moving commercial, environmental, or social issues and opportunities which need to be responded to set against a backdrop of a clear strategic direction.
- **Built on the good work of the past.** Our voice our vision
- **Update and rebranded** to reflect the long term goals of the strategy - GSR 28 March.
- **Far North 2100**, will assimilate the District Strategy, the Strategy of Strategies, the Spatial plan, Growth Management Plans.

Political Factors



Sustainable
infrastructure
and finances



"Four Well beings"
Well Being Budget



Improve
Voting Numbers



More Deliberate
and Active Role
in **Tourism**



Greater
Collaboration

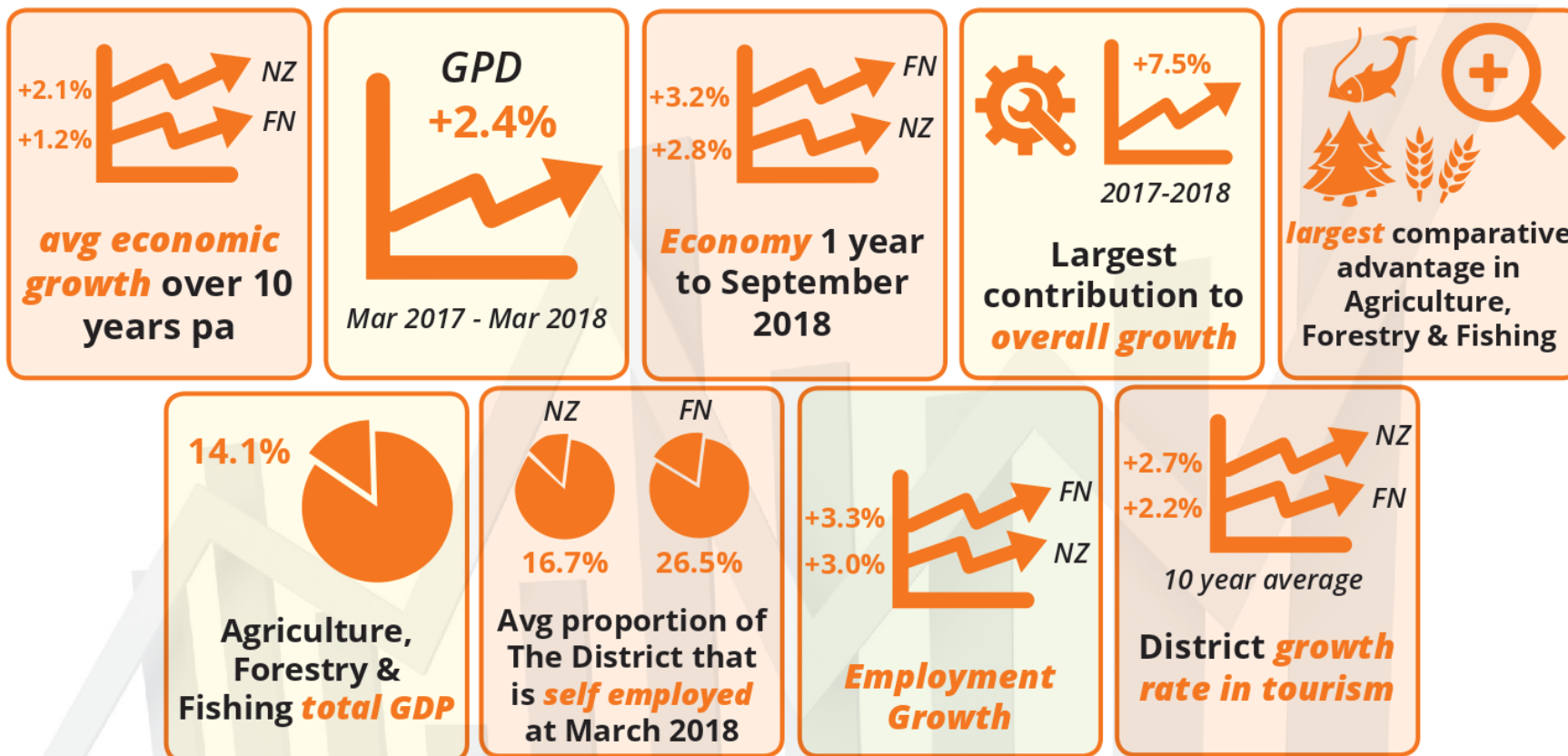


Funding for Māori
Housing and Land
Development

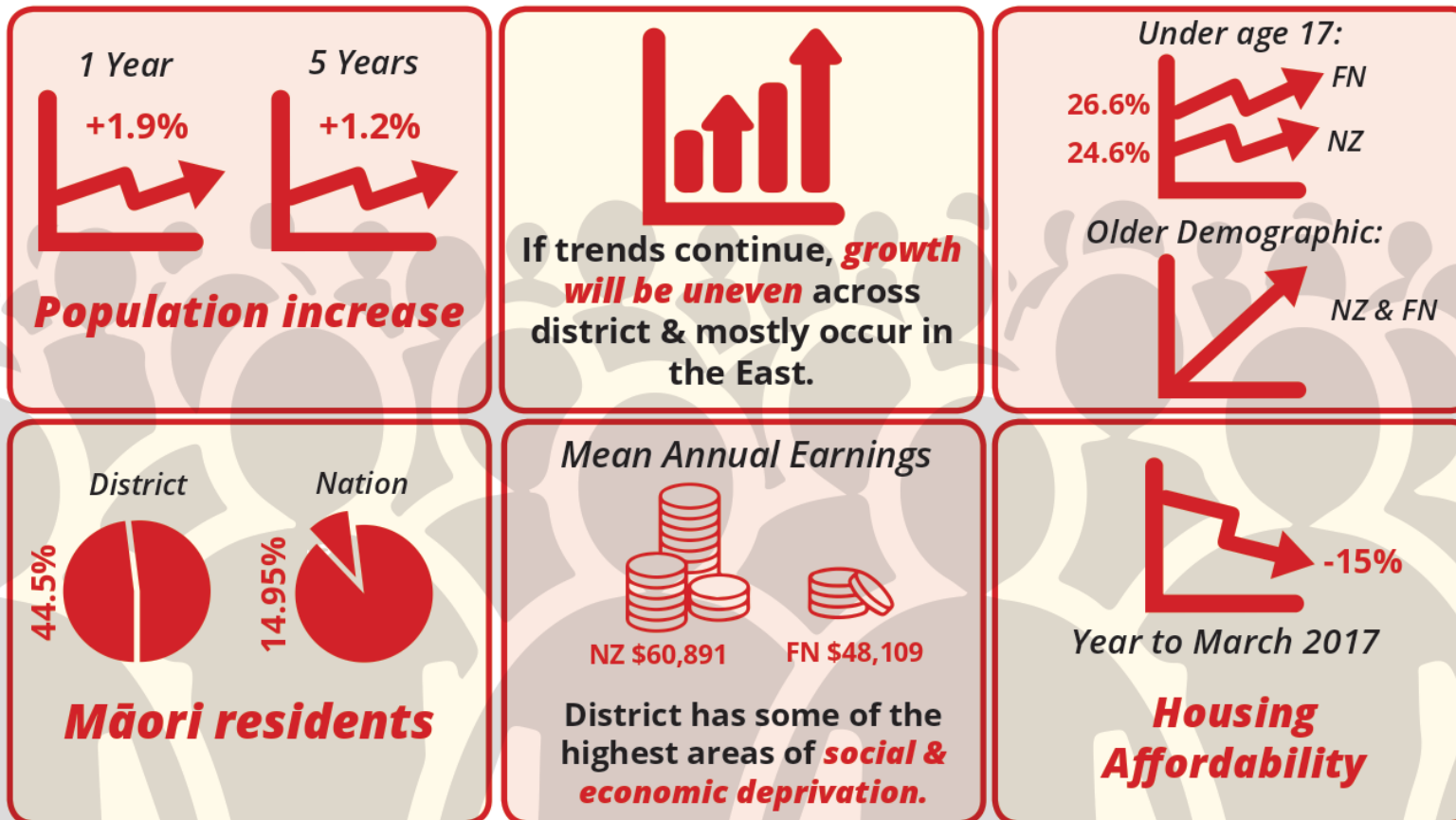


Relationships with
Tangata Whenua

Economic Factors



Social Factors



Technological Factors



Unsealed roads,
maintenance &
resilience



Unused rail tracks
from Whangarei to
Moerewa



Ngawha geothermal
power station will
improve power supply



Early adopter of
electric vehicle
technology



42 towns to be
connected with Fibre



To be delivered to
some rural, remote
settlements

Legal Factors



Workplace Health & Safety and Wellbeing
mental health & wellbeing focus

Treaty of Waitangi Settlements



**Maori economic growth
/ relationships and
partnerships**

Environmental Factors



**Significant
natural wetlands**



**Versatile, high class
soils** very suitable
for growing food
crops



Land cover
agriculture / forestry
/ horticulture vs
Indigenous vegetation



**Access & land
management
challenges. 2347km
coastline**



Biosecurity risks:
myrtle rust,
mycoplasma bovis,
kauri dieback, pest
control



Climate change:
drought, rainfall,
temperature, fires,
rising sea level,
storm, coastal erosion



Waste management:
minimise plastic
waste / phase out
single use / shifts in
recycling



**Scarcity of high
quality *natural*
water resources.**

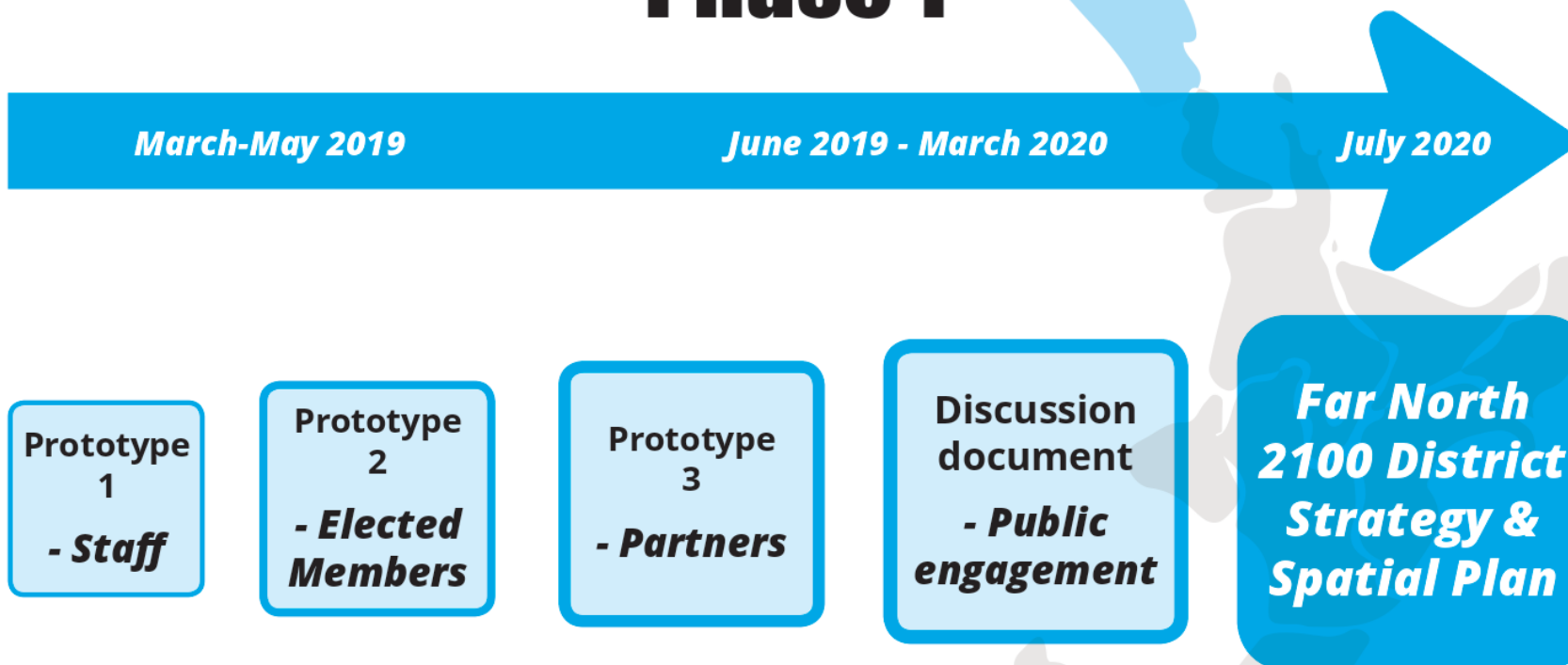
Far North 2100

Key Milestones and Dates

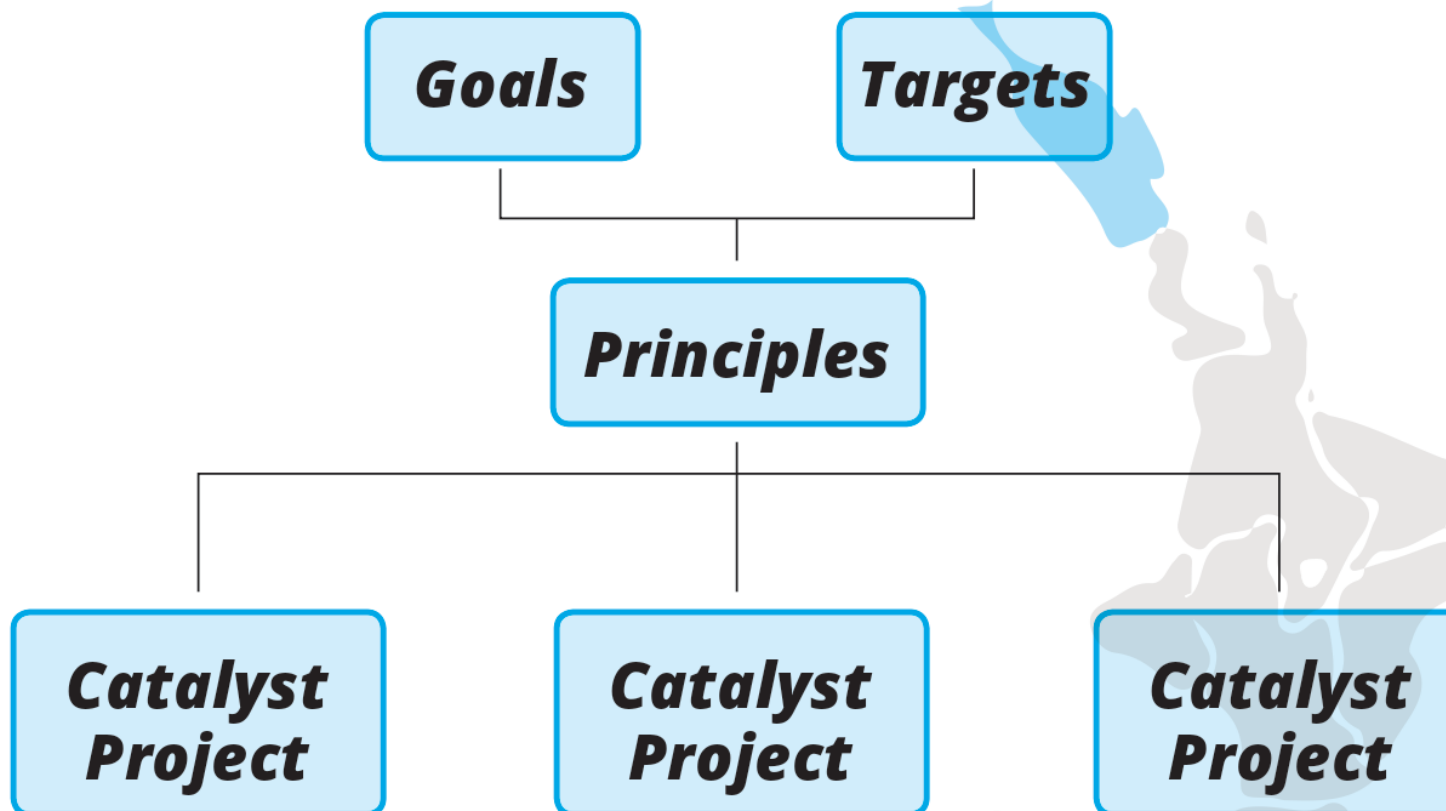
CONTENT	DATE
Staff Workshop	26TH March 19
Councillor Workshop	2ND May 19
Summit with external partners	early/mid June 19
Discussion document public engagement	Sept/Oct 2019
Draft Far North 2100 LGA consultation	Feb/Mar 2020
Far North 2100 adopted	July 2020

Far North 2100 Process

Phase 1

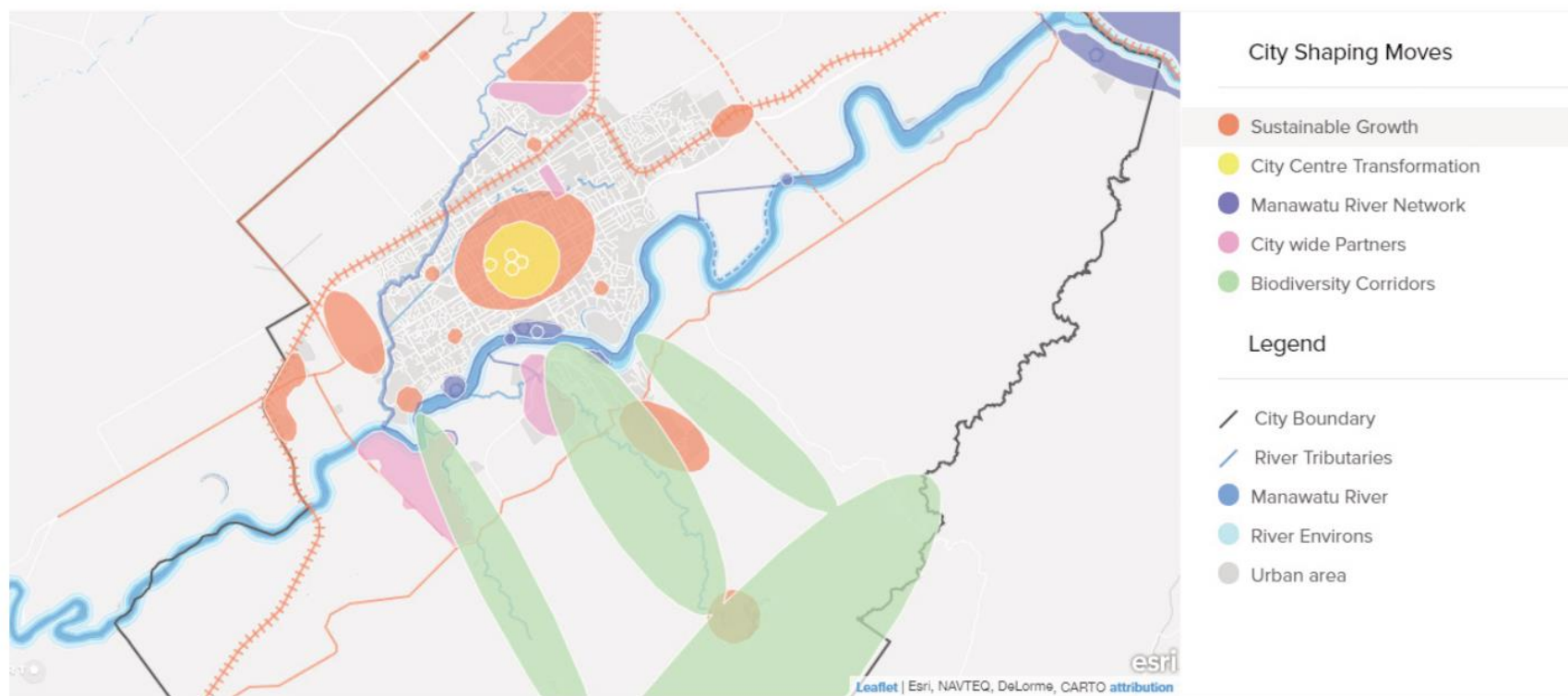


Far North 2100



The Big Picture

Example from Palmerston North



Far North 2100 Process

Phase 2

