



**Far North
District Council**



Te Kaunihera o Te Hiku o te Ika **AGENDA**



Supplementary Reports Friday, 13 December 2024

Time: 10:00am
Location: Council Chamber
Memorial Avenue
Kaikohe

Membership:

Chairperson Chicky Rudkin
Deputy Chairperson Tanya Filia
Councillor John Vujcich
Member Mike Edmonds
Member Trinity Edwards
Member Harmonie Gundry
Member Jessie McVeagh

Te Paeroa Mahi / Order of Business

7	Ngā Pūrongo / Reports	6
7.5	Amenity Lighting Priorities	6

7 NGĀ PŪRONGO / REPORTS

7.5 AMENITY LIGHTING PRIORITIES

File Number: A5008208

Author: Jeanette England, Team Leader - Assets & Project Delivery

Authoriser: Tanya Proctor, Head of Infrastructure Strategy

TAKE PŪRONGO / PURPOSE OF THE REPORT

TO SEEK APPROVAL FROM THE KAIKOHE-HOKIANGA COMMUNITY BOARD FOR THE PRIORITISATION OF THE AMENITY LIGHTING INSTALLATIONS OVER THE NEXT THREE YEARS (2024-2027). WHAKARĀPOPOTO MATUA / EXECUTIVE SUMMARY

- Community Board to prioritise the lights for each of the locations suggested over the next three-year period.
- Determine the viability of solar lighting as the preferred option.
- Locations provided by the Kaikohe-Hokianga Community Board for pricing.
- Provision of lighting specifications for information.

TŪTOHUNGA / RECOMMENDATION

That the Kaikohe-Hokianga Community Board approves:

- a) The installation of the Amenity lights as**
 - i) Priority #1, Financial Year 2024/25 - Kaikohe Marino Court EV Charging Station**
 - ii) Priority #2, Financial Year 2025/26 - Ōmāpere Freese Park Playground**
 - iii) Priority #3, Financial Year 2026/27 – Ōpononi Fairlie Crescent/SH12 Walkway**
- b) Approves the ongoing operational expenditure of \$1,500 per annum for each of the lights over the next three years (2024/2027).**

1) TĀHUHU KŌRERO / BACKGROUND

The Community Board have an annual budget of \$10,000 for new amenity lights within the ward. This budget has traditionally been utilised as part of other larger projects at parks and reserves within the ward.

There are no major parks and reserves projects over the next three years due to the LITE LTP requirements. For staff to successfully install new amenity lights within budget, the Community Board were asked to provide suggested locations to enable accurate costings for each of the proposed sights.

2) MATAPAKI ME NGĀ KŌWHIRINGA / DISCUSSION AND OPTIONS

The Community Board provided a list of three locations for the Kaikohe-Hokianga ward so staff could investigate and cost the options.

Staff engaged lighting company Leighton Electrical Ltd to provide quotes for the new amenity lighting in the Kaikohe-Hokianga ward.

Mains vs Solar:

Installing 230V amenity lighting would not only be over the allocated \$10,000 budget per location but would also incur additional costs for miscellaneous electrical gear. This includes cabling, connecting to an existing metering system or installation of a new meter, installing circuit breakers, and

upgrading or integrating with the switchboard. On top of these material costs, the required labour for such work would further escalate expenses, making this approach financially impractical.

By comparison, LED solar lighting eliminates these complications. It operates independently of the electrical grid, avoids costly infrastructure and labour, and remains a budget-friendly, sustainable, and maintenance-efficient solution. Solar lighting is the clear choice for keeping the project on track and within budget.

Life of these lights is approximately 50,000 hours or 6 to 10 years, dependant on conditions, at an estimated cost of \$3,500 for renewals.

Maintenance Program Suggestion:

For ongoing maintenance of the LED solar lighting, it is suggested not engaging a specialist electrical company to keep costs to a minimum.

The simplicity of maintaining solar lights means no specialised skills or qualifications are required. Tasks like cleaning the solar panel tops and pressing the on/off switch to verify functionality can be performed by general personnel, further reducing expenses.

This cost-effective approach ensures the lights remain in excellent working condition while keeping long-term operational costs as low as possible. It's a practical solution that aligns with the sustainable and budget-friendly nature of the project.

Ongoing operational budget required would be approximately \$1,500 per annum per light. This would include the hire of a scissor lift, labour and vehicle mileage.

Below is a table, for reference, outlining the work required, approximate location within the identified site and costs for each of the new Amenity Lights.

Pricings of each of the locations, show that the budget of \$10,000 per year will only enable the installation of one (1) light per year.

Also included below is the Lighting Specifications which show the type and style of light to be installed for reference purposes.

Priority # 1 - Financial year 2024/2025

Location	Considerations per site	Cost
<p>Kaikohe Marino Court beside EV charger, this is a high traffic, high use location</p>	<p>Traffic Management Plan (TMP): Not required for this site.</p> <p>Cable Location: A cable locator is required due to boring holes for the pole foundations and installation.</p> <p>This ensures underground services are identified and avoids damage near the transformer.</p> <p>Area Management: Leighton Electrical will handle coning off the area to secure the worksite. The EV charger will be out of use for one day during installation.</p> <p>Installation Process: Solar light will be mounted on the pole and tested before pole erection. Hole boring will be carried out safely, considering identified utilities.</p> <p>Challenges: Careful coordination with the cable locating process to prevent interruptions or damage near the transformer. Effectively managing public access and minimizing disruption during EV charger downtime.</p>	<p>\$7,184</p>



Priority # 2 - Financial Year 2025/2026

Location	Considerations per site	Cost
<p>Ōmāpere Freese Park Playground, this site has no lighting in this location which would also aid in lighting the carpark adjacent to the playground.</p>	<p>Traffic Management Plan (TMP): Not required for this site.</p> <p>Cable Location: Not required, as no underground utilities are expected in the playground area.</p> <p>Area Management: Leighton Electrical will cone off the playground area to secure the worksite and ensure public safety.</p> <p>Equipment Needed: Digger with auger attachment used for boring holes for pole foundations and installation.</p> <p>Installation Process: Solar light will be pre-mounted and tested on the pole before it is erected.</p> <p>Routine installation procedures will be followed, with minimal disruption.</p> <p>Challenges: Ensuring the work area is fully secured to prevent unauthorized access during installation. Managing public awareness if the playground is partially inaccessible during work.</p>	<p>\$7,566</p>



Priority #3 – Financial Year 2026/2027

Location	Considerations per site	Cost
<p>Ōpononi Walkway at the end of Fairlie Crescent to SH12, this is a paper road and our Transport team have plans in progress to install bollards and other measures to prevent vehicle access to this walkway. This work will be completed this financial year, so an exact location can be determined when due.</p>	<p>Traffic Management Plan (TMP): Not required for this site.</p> <p>Cable Location: Cable locating will be performed in-house by Leighton Electrical, ensuring safety during hole boring for the pole foundations and installation.</p> <p>Area Management: The worksite will be coned off to secure the public walkway and ensure safety during installation.</p> <p>Equipment Needed: Digger with auger attachment used for boring holes for pole installation.</p> <p>Installation Process: Solar light will be pre-mounted and tested on the pole prior to erection. Standard procedures will be followed for efficient and safe installation.</p> <p>Challenges: Ensuring minimal disruption to public access on the walkway during the installation process.</p>	<p>\$7,566</p>



Lighting Specifications:

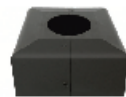
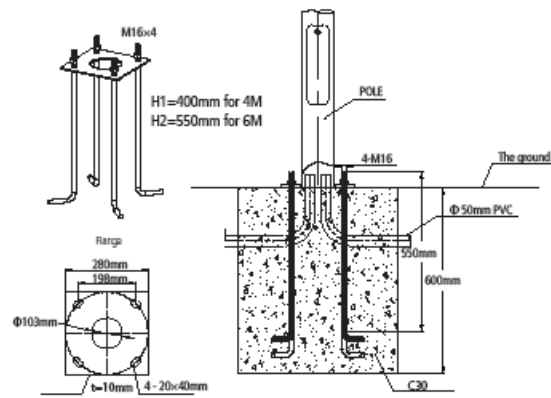


POLE GPL800-4M/6M

FEATURES

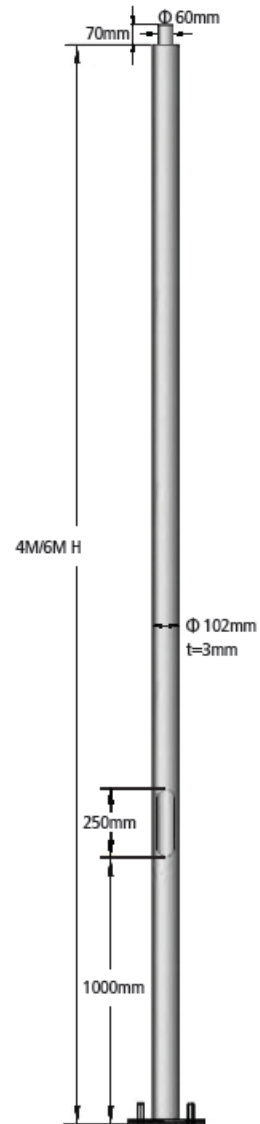
- Material Q235 steel pipe pole
- Surface treatment: Hot dip galvanisation with thickness of 80-100µm and anti-ageing electrostatic spray processing with super resistance to corrosion
- Ultimate support weight: 250KG
- Customised colour or lengths are available

FOUNDATION



GPL800/BASE COVER BK
GPL800/BASE COVER SL
(order separately)

MODEL NO.	COLOUR
GPL800/4M BK	Black
GPL800/6M SL	Silver
GPL800/6M BK	Black

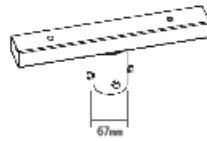


Specifications above are for reference only and may vary without prior notice




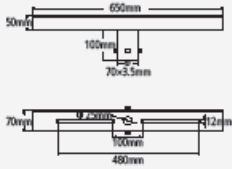

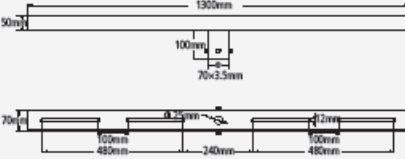
ACCESSORIES

Customised floods bracket

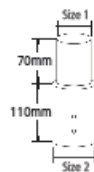


- Material: Q235 steel
- Surface treatment: Hot dip galvanisation with thickness of 80-100µm and anti-ageing electrostatic spray processing with super resistance to corrosion. Customised colour or lengths are available

Stock item code (Suitable for Bright Star and Marina floods)

MODEL NO.	DIMENSIONS
<p>GPL800 SINGLE T BRACKET SL</p> 	
<p>GPL800 TWIN T BRACKET SL</p> 	

Customised pole adaptor



- Size 1:
Top exterior diameter options: 48, 60, 76mm
- Size 2:
Bottom interior diameter options: 60, 76, 89mm

Specifications above are for reference only and may vary without prior notice



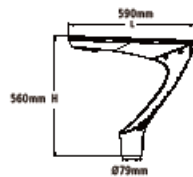
GPL813 THEMIS
IP65 SOLAR LED POST TOP LIGHT



FEATURES

- Die-cast aluminium housing
- Powder coated finish in black
- High efficiency Mono solar panel 38W/18V
- MPPT solar charging controller
- LifePO4 battery 12.8V 154WH
- 2000 Cycles LifePO4 battery
- Ultra efficiency LED chips, up to 190lm/w
- Built-in PIR + Motion sensor
- Charging time: 5 hours
- Back up time: 25 hours
- Recommended mounting height: 4-6M
- LED lifespan: 50000 hours @ L70 B10, Ta 25°C
- Working temperature: -10 - 60°C
- Charging temperature: 0 - 45°C

DIMENSIONS



NOTE: the best fit pole diameter is 76mm

TECHNICAL SPECIFICATIONS

MODEL NO.	SOLAR PANEL	LIFEPO4 BATTERY	POWER (W)	LUMEN (lm)	COLOUR TEMPERATURE (K)	CRI	FITTING COLOUR
GPL813 BC BK SOLAR	38W 18V Mono	12.8V154WH	18	2800max	3000/6000	>80	Black

Specifications above are for reference only and may vary without prior notice

IMAGE



FACTORY DEFAULT SETTING

Sensing time	Sensor activation	Sensor deactivation
1-2 hours	100%	30%
3-5 hours	30%	10%
6-12 hours	10%	10%
13-15 hours	20%	20%

ACCESSORIES



GPL813/ADAPTOR 60-76



GPL813/REMOTE CONTROL

TAKE TŪTOHUNGA / REASON FOR THE RECOMMENDATION

The prioritisation of the lights is based on knowledge of each of the sites and the best information available at the time of writing this report. The locations are those, or as close as possible, suggested by the Community Board.

3) PĀNGA PŪTEA ME NGĀ WĀHANGA TAHUA / FINANCIAL IMPLICATIONS AND BUDGETARY PROVISION

There will be an ongoing increase to the operational budgets of approximately \$1,500 per annum per light.

ĀPITIHINGA / ATTACHMENTS

Nil

Hōtaka Take Ōkawa / Compliance Schedule:

Full consideration has been given to the provisions of the Local Government Act 2002 S77 in relation to decision making, in particular:

1. A Local authority must, in the course of the decision-making process,
 - a) Seek to identify all reasonably practicable options for the achievement of the objective of a decision; and
 - b) Assess the options in terms of their advantages and disadvantages; and
 - c) If any of the options identified under paragraph (a) involves a significant decision in relation to land or a body of water, take into account the relationship of Māori and their culture and traditions with their ancestral land, water sites, waahi tapu, valued flora and fauna and other taonga.
2. This section is subject to Section 79 - Compliance with procedures in relation to decisions.

He Take Ōkawa / Compliance Requirement	Aromatawai Kaimahi / Staff Assessment
State the level of significance (high or low) of the issue or proposal as determined by the Council's Significance and Engagement Policy	This project has a relatively low degree of significance as the Community Board have determined the locations as part of their strategic plans which have already been consulted on with their communities.
State the relevant Council policies (external or internal), legislation, and/or community outcomes (as stated in the LTP) that relate to this decision.	This project meets the community outcome of "Safe, Healthy Communities". By providing lighting in areas with little or no lighting and aids in the safety of our communities.
State whether this issue or proposal has a District wide relevance and, if not, the ways in which the appropriate Community Board's views have been sought.	This project has does not have a district wide relevance as the Community Board have delegated authority for Amenity Lights and they have determined the locations for these new lights.
State the possible implications for Māori and how Māori have been provided with an opportunity to contribute to decision making if this decision is significant and relates to land and/or any body of water. State the possible implications and how this report aligns with Te Tiriti o Waitangi / The Treaty of Waitangi.	The Community Board has provided the locations of the lighting as part of their strategic plan which have had the wider community input.
Identify persons likely to be affected by or have an interest in the matter, and how you have given consideration to their views or preferences (for example – youth, the aged and those with disabilities).	Lighting as proposed will aid with accessibility and visibility in the locations mentioned.
State the financial implications and where budgetary provisions have been made to support this decision.	There are not significant changes to the financial implications for this new light. Provision for an ongoing operational budget has been included in the report.
Chief Financial Officer review.	The CFO has reviewed this report.