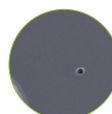


GPL813

THEMIS

IP65 SOLAR LED POST TOP LIGHT



ON/OFF BUTTON



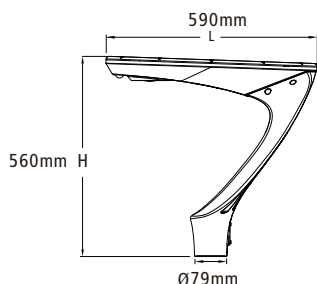
DARKSKY APPROVED
Reduces light pollution
Certified by DarkSky.org



FEATURES

- Die-cast aluminium housing
- Powder coated finish in black
- High efficiency Mono solar panel 38W/18V
- MPPT solar charging controller
- LifePO4 battery 12.8V 154WH
- 2000 Cycles LifePO4 battery
- Ultra efficiency LED chips, up to 190lm/w
- Built-in PIR + Motion sensor
- Charging time: 5 hours
- Back up time: 25 hours
- Recommended mounting height: 4-6M
- LED lifespan: 50000 hours @ L70 B10, Ta 25°C
- Working temperature: -10 - 60°C
- Charging temperature: 0 - 45°C

DIMENSIONS



NOTE: the best fit pole diameter is 76mm

IMAGE



FACTORY DEFAULT SETTING

Sensing time	Sensor activation	Sensor deactivation
1-2 hours	100%	30%
3-5 hours	30%	10%
6-12 hours	10%	10%
13-15 hours	20%	20%

ACCESSORIES



GPL813/ADAPTOR 60-76



GPL813/REMOTE CONTROL

TECHNICAL SPECIFICATIONS

MODEL NO.	SOLAR PANEL	LIFEPO4 BATTERY	POWER (W)	LUMEN (lm)	COLOUR TEMPERATURE (K)	CRI	FITTING COLOUR
GPL813 BC BK SOLAR	38W 18V Mono	12.8V154WH	18	2800max	3000/6000	>80	Black

Specifications above are for reference only and may vary without prior notice