

COMMUNITY BOARD MEMBERS REPORT

Report to Community Board	Te Hiku
Members Name	John Stewart
Subdivision	Kaitaia
Date	August 22

REPORT

1) Meetings/Functions

16/08 Te Hiku community board footpath meeting and board meeting
22/08 KBA Meeting
23/08 Community board meeting and Te ahū (strategic plan meeting)
27/08 HBGFC wharf opening

2) Issues -

On 23rd April 2021 Bill Subritzky and I presented the Te Hiku Community boards submission to the council long term plan. Part of that submission was for the Pukenui boardwalk concept from the commercial wharf to Lambs bridge reserve.

The Te hiku board want to remind council that this concept is there to protect the reserve from further erosion.

As it is a walkway with educational plaques and a matariki viewing platform, some of its funding can come from outside council and ratepayers, we as a board want to get this across the line. The first stage is getting money to plan and cost the walkway, without this we can't go for funding.

You will see in my latest concept I have included the matariki platform as there is added funding for matariki tourism projects. I have also added a new image of a cheaper gabion basket option for the foundations and maybe just a gravel footpath.

This will be a great test to see if the community want to then proceed with more protection paths but from south of the commercial wharf back to the game club

PROPOSED WALKWAY WITH UPDATED MATARIKI PLATFORM AND SAMPLE OF GABION BASKET PATHWAY

PROPOSED PUKENUI SCENIC BOARDWALK

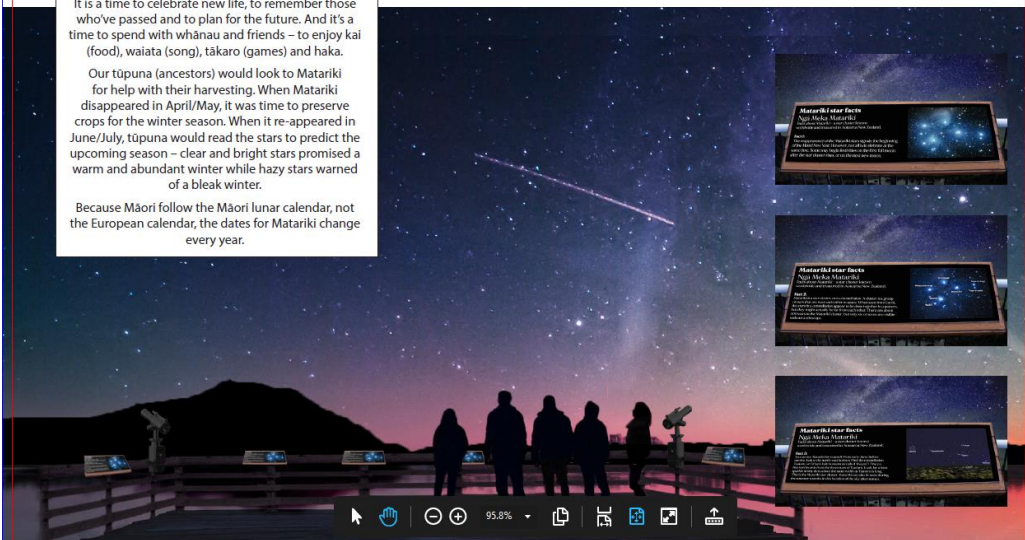
Including Matariki star gazing platform information plaques educating people around Matariki. Dark, clear skies, unique celestial features and otherworldly landscapes make stargazing in New Zealand a breathtakingly magical experience.

Matariki?

It is a time to celebrate new life, to remember those who've passed and to plan for the future. And it's a time to spend with whānau and friends – to enjoy kai (food), waiata (song), tākaro (games) and haka.

Our tūpuna (ancestors) would look to Matariki for help with their harvesting. When Matariki disappeared in April/May, it was time to preserve crops for the winter season. When it re-appeared in June/July, tūpuna would read the stars to predict the upcoming season – clear and bright stars promised a warm and abundant winter while hazy stars warned of a bleak winter.

Because Māori follow the Māori lunar calendar, not the European calendar, the dates for Matariki change every year.



PROPOSED PUKENUI SCENIC BOARDWALK

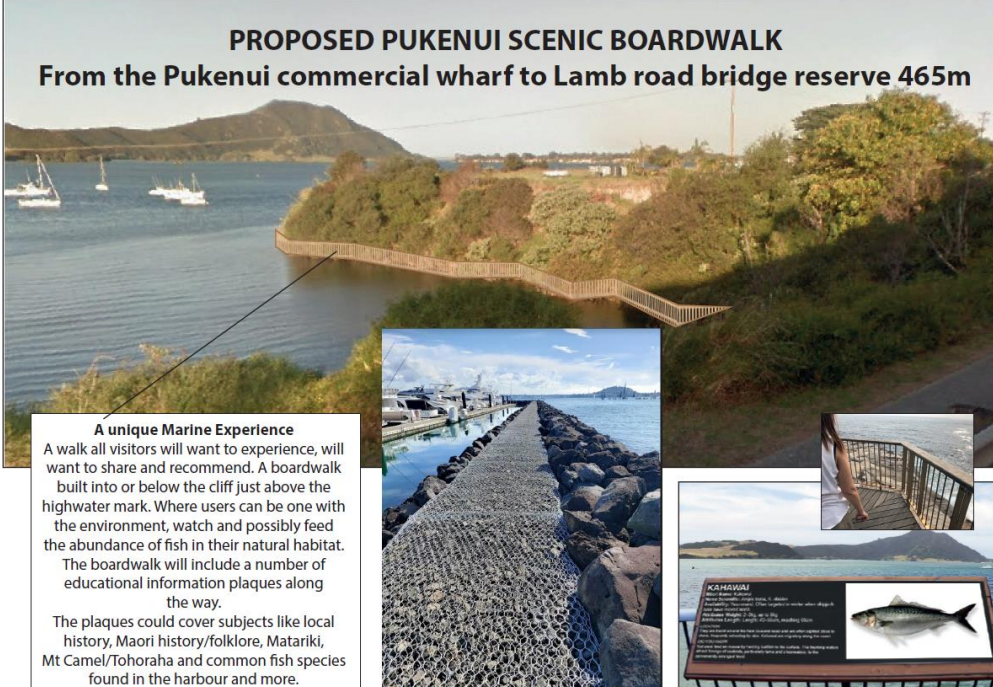
From the Pukenui commercial wharf to Lamb road bridge reserve 465m

A unique Marine Experience

A walk all visitors will want to experience, will want to share and recommend. A boardwalk built into or below the cliff just above the highwater mark. Where users can be one with the environment, watch and possibly feed the abundance of fish in their natural habitat.

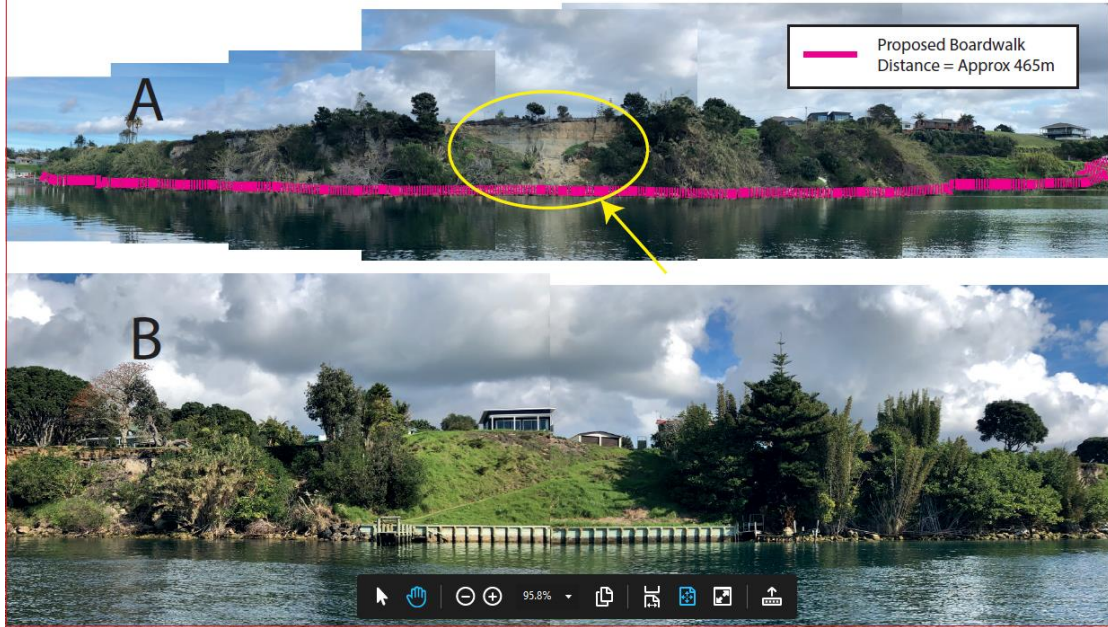
The boardwalk will include a number of educational information plaques along the way.

The plaques could cover subjects like local history, Maori history/folklore, Matariki, Mt Camel/Tohoraha and common fish species found in the harbour and more.



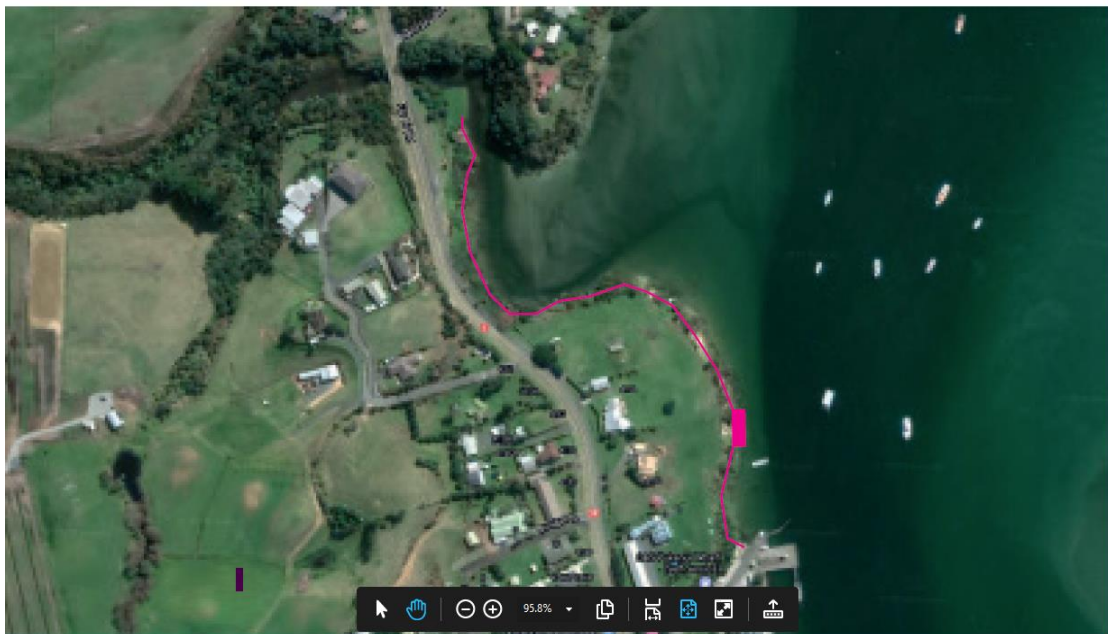
REDUCE FUTURE EROSION

Any foundations on the Boardwalk will help reduce future erosion as seen in image (A)
Image (B) is only a few hundred metres south of image (A) the structure (retaining wall) shows how effective
it is at stabilising the cliff.



PUKENUI BOARDWALK APPROX 465 METRES

Proposed Boardwalk
Distance = Approx 465m



On a similar subject that involves the same reserve.
 The Te hiku Board as a team decided to remove the following plans (2screen shot images below) from any community consultation, as why would we build a walkway on top of a reserve that is not stable when we plan to build a walkway around the reserve above high water mark into the cliff to make it stable?.

Why then did council (3months later) send landowners a letter to make it known there will be surveyors turning up to look into the exact work the community board removed from our plans.?



Desig
 Dictri.

Lambs reserve southern end with boardwalk ramp to Pukenui wharf

