

Section 2
Blk VI Omapere SD
(76.6171)

Whakanekeke River

Section 2
Blk VI Omapere SD
(76.6171)

Lot 1
DP 336637
25.3000

Lot 3
DP 336637
4.0080

James McKenzie Way

Lot 2
DP 437618
51.2334

Lot 9
DP 339982
2.6005

Lot 1
DP 180133
1.4005

Section 4
SO 326020
PI Allotment 16
PSH OF Okaihau
0.7620

Lot 2
DP 180133
1.5725

Lot 3
DP 100133
1.7830

PI Allotment SE16
PSH OF Okaihau
16.5920

PI Allotment 17
PSH OF Omapere
11.3534

Lot 1
DP 89511
2.0280

Lot 1
DP 66979
26.8888

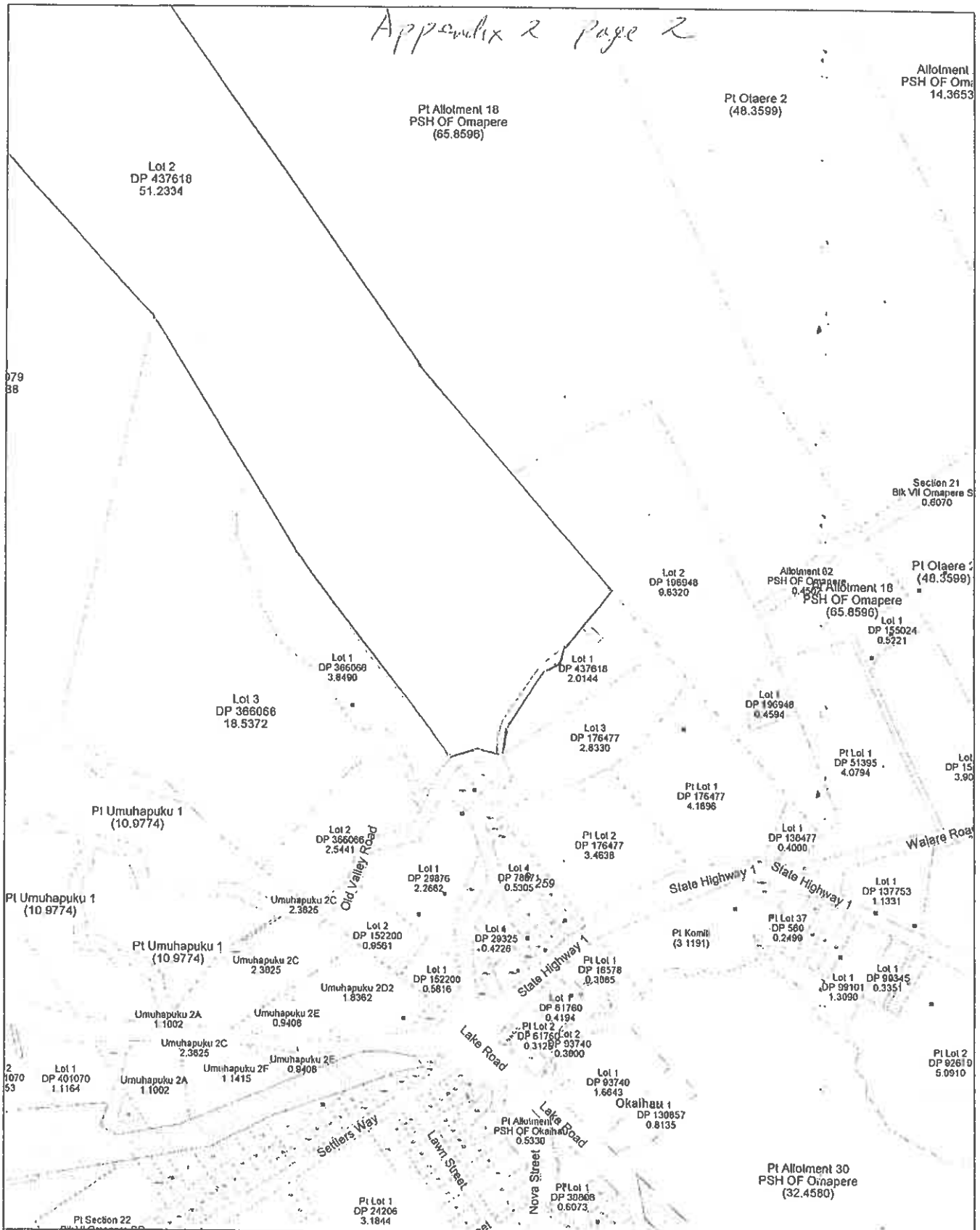
Lot 2
DP 407679
11.1322

PI Allotment 102
PSH OF Okaihau
108.2371

QuickMap
Custom Software Ltd



Any person wishing to rely on the information shown on this map must independently verify the information
Scale 1:7401 Topographical and Cadastral map derived from LINZ data. Printed: 13/07/18 13:34.



079
88

Allotment
PSH OF Om
14.3653

Section 21
Blk VII Omarepe S
0.6070

Pt Olaere 2
(48.3599)

Lot
DP 15
3.90

Lot 1
DP 90345
0.3351

Pt Lot 2
DP 92619
5.0910

Pt Umuhapuku 1
(10.9774)

Pt Umuhapuku 1
(10.9774)

Lot 1
DP 401070
1.1164

Pt Umuhapuku 1
(10.9774)

Pt Umuhapuku 1
(10.9774)

Lot 1
DP 11002
1.1002

Lot 3
DP 366066
18.5372

Umuhapuku 2C
2.3825

Umuhapuku 2A
1.1002

Umuhapuku 2A
1.1002

Lot 2
DP 366066
2.5441

Umuhapuku 2C
2.3825

Umuhapuku 2C
2.3825

Umuhapuku 2E
0.9408

Umuhapuku 2F
1.1415

Lot 1
DP 29876
2.2682

Lot 2
DP 152200
0.8561

Umuhapuku 2D2
1.8362

Umuhapuku 2E
0.9408

Umuhapuku 2E
0.9408

Lot 4
DP 29325
0.4228

Lot 4
DP 78871
0.5305

Lot 1
DP 152200
0.5816

Lot 2
DP 61760
0.4194

Lot 2
DP 61760
0.3129

Lot 3
DP 176477
2.8335

Pt Lot 2
DP 176477
3.4638

State Highway 1

Pt Lot 1
DP 16578
0.3085

Lot 1
DP 93740
1.6643

Okaihau 1
DP 130857
0.8135

Pt Lot 1
DP 176477
4.1656

Lot 1
DP 138477
0.4000

Pt Lot 37
DP 580
0.2499

Pt Komiti
(3 1191)

Lot 1
DP 99101
1.3090

Lot 1
DP 90345
0.3351

Lot 1
DP 196948
0.4594

Pt Lot 1
DP 51395
4.0794

Lot 1
DP 138477
0.4000

State Highway 1

State Highway 1

Lot 1
DP 90345
0.3351

Lot 1
DP 99101
1.3090

Lot 1
DP 90345
0.3351

Pt Allotment 30
PSH OF Omarepe
(32.4580)

QuickMap
Custom Software Ltd



Any person wishing to rely on the information shown on this map must independently verify the information
Scale 1:7401 Topographical and Cadastral map derived from LINZ data. Printed: 13/07/18 13:31