

R. E. OWEN, Government Printer,

REFERENCE

	Sand		Shingle
	Cliffs & Terraces		Stop bank
	Rocks		Building
	Church		Cemetery
	Windmill		Radio Mast
	Aerial station $\Delta 673'$ with permanent signal $\Delta 126'$ in feet above mean sea level		Contours at 100' intervals
	Telegraph office, T.		Post office, P, with telephone, Pt.

THIS SHEET LIES IN GRID SQUARES N08 & N09

TO GIVE A GRID REFERENCE ON THIS SHEET
Disregard the smaller co-ordinate figures at the corners and in the margins. They are for finding full co-ordinates viz 890

PAY ATTENTION TO LARGER MARGINAL FIGURES AND TO THOSE PRINTED ON THE FACE OF THE MAP VIZ 890

Point	Sand $\Delta 247'$	
East	68	8
Take west edge of square in which point lies and read the figures printed opposite this line (on north or south margin) or on the line itself (on the face of the map)	68	8
Estimate tenths eastwards	3	
East	683	
North		8
Take south edge of square in which point lies and read the figures printed opposite this line (on east or west margin) or on the line itself (on the face of the map)		8
Estimate tenths northwards		8
North		8
Reference	683840	
Unit	yards	Square
Reference to nearest	1000 yards	100 yards



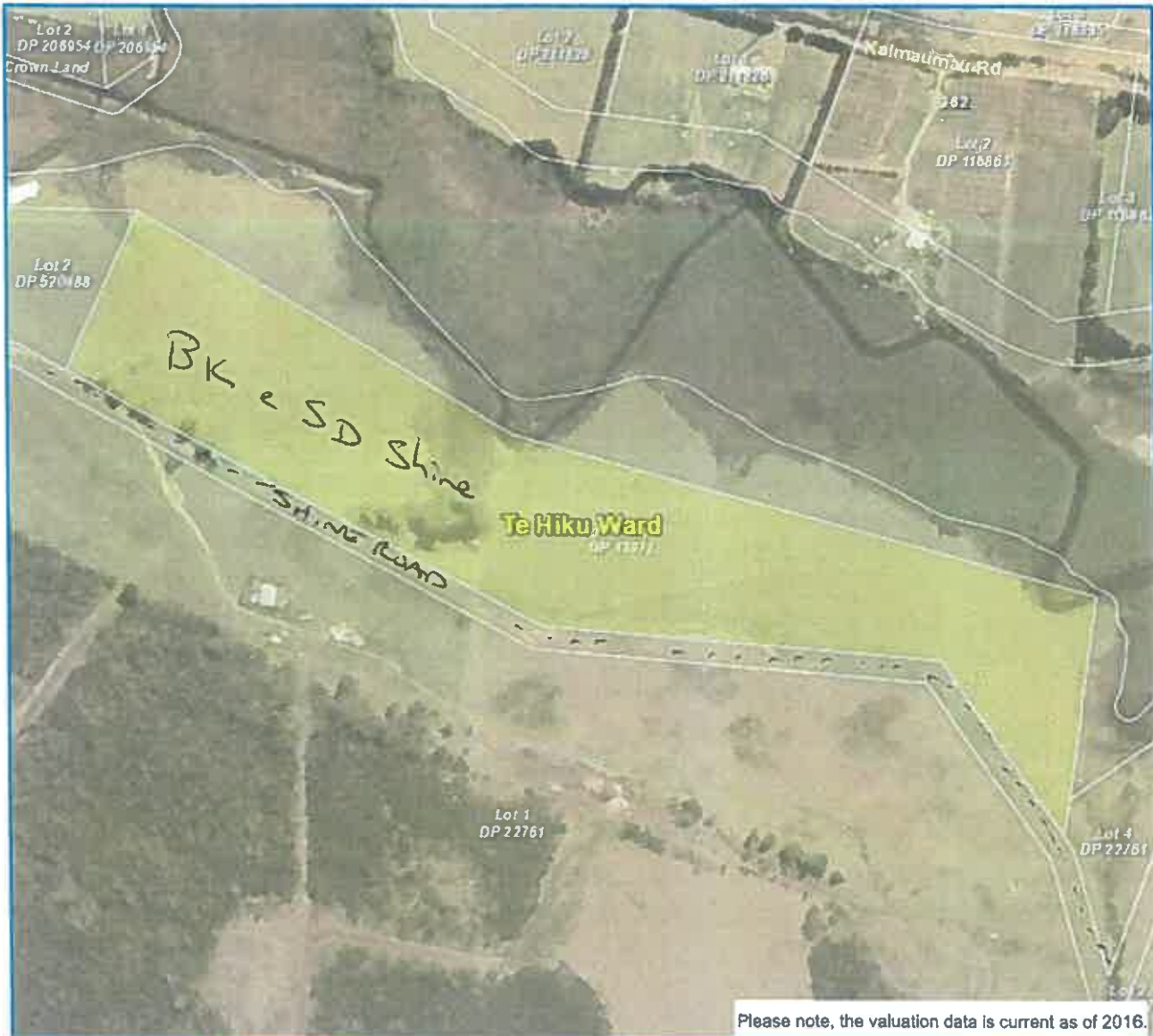
This map has been reproduced from the Far North District Council (FNDC) databases. Copyright and the information contained in it belongs to FNDC. No person may reproduce this map without the express written permission from FNDC. This is updated from time to time but may not be accurate. No reliance on the information contained on this map by any person is permitted. For the avoidance of doubt, this map does not constitute a LIM report. FNDC will not be liable for any omissions or errors of information contained on this map. FNDC recommends that persons seek specific advice on individual properties from FNDC and other specialist organisations which may hold more up to date or accurate information. Contractors are to verify the exact location of all Council services on site, before work commences. Contractors are liable for any damage they may cause to Council services including any services not identified on this plan. If you find information on this map that may not be accurate, please advise FNDC.

— Shine Road



Please note, the valuation data is current as of 2016.

This map has been reproduced from the Far North District Council (FNDC) databases. Copyright and the information contained in it belongs to FNDC. No person may reproduce this map without the express written permission from FNDC. This is updated from time to time but may not be accurate. No reliance on the information contained on this map by any person is permitted. For the avoidance of doubt, this map does not constitute a LIM report. FNDC will not be liable for any omissions or errors of information contained on this map. FNDC recommends that persons seek specific advice on individual properties from FNDC and other specialist organisations which may hold more up to date or accurate information. Contractors are to verify the exact location of all Council services on site before work commences. Contractors are liable for any damage they may cause to Council services including any services not identified on this plan. If you find information on this map that may not be accurate, please advise FNDC.



Please note, the valuation data is current as of 2016.

Valuation Number:	00013-13201
Address:	Pt Lot 1 Kaimaumau Road Waiharara, 0486
Legal Description:	Pt Lot 1 DP 13971
Capital Value:	\$195,000.00
Land Value:	\$185,000.00
Rate Account:	
Area (ha)	99997

This map has been reproduced from the Far North District Council (FNDC) database. Copyright and the information contained in it belongs to FNDC. No person may reproduce this map without the express written permission from FNDC. This is updated from time to time but may not be accurate. No reliance on the information contained on this map by any person is permitted. For the avoidance of doubt, this map does not constitute a LIM report. FNDC will not be liable for any omissions or errors of information contained on this map. FNDC recommends that persons seek specific advice on individual properties from FNDC and other specialist organisations which may hold more up to date or accurate information. Contractors are to verify the exact location of all Council services on site before work commences. Contractors are liable for any damage they may cause to Council services, including any services not identified on this plan. If you find information on the map that may not be accurate, please advise FNDC.