

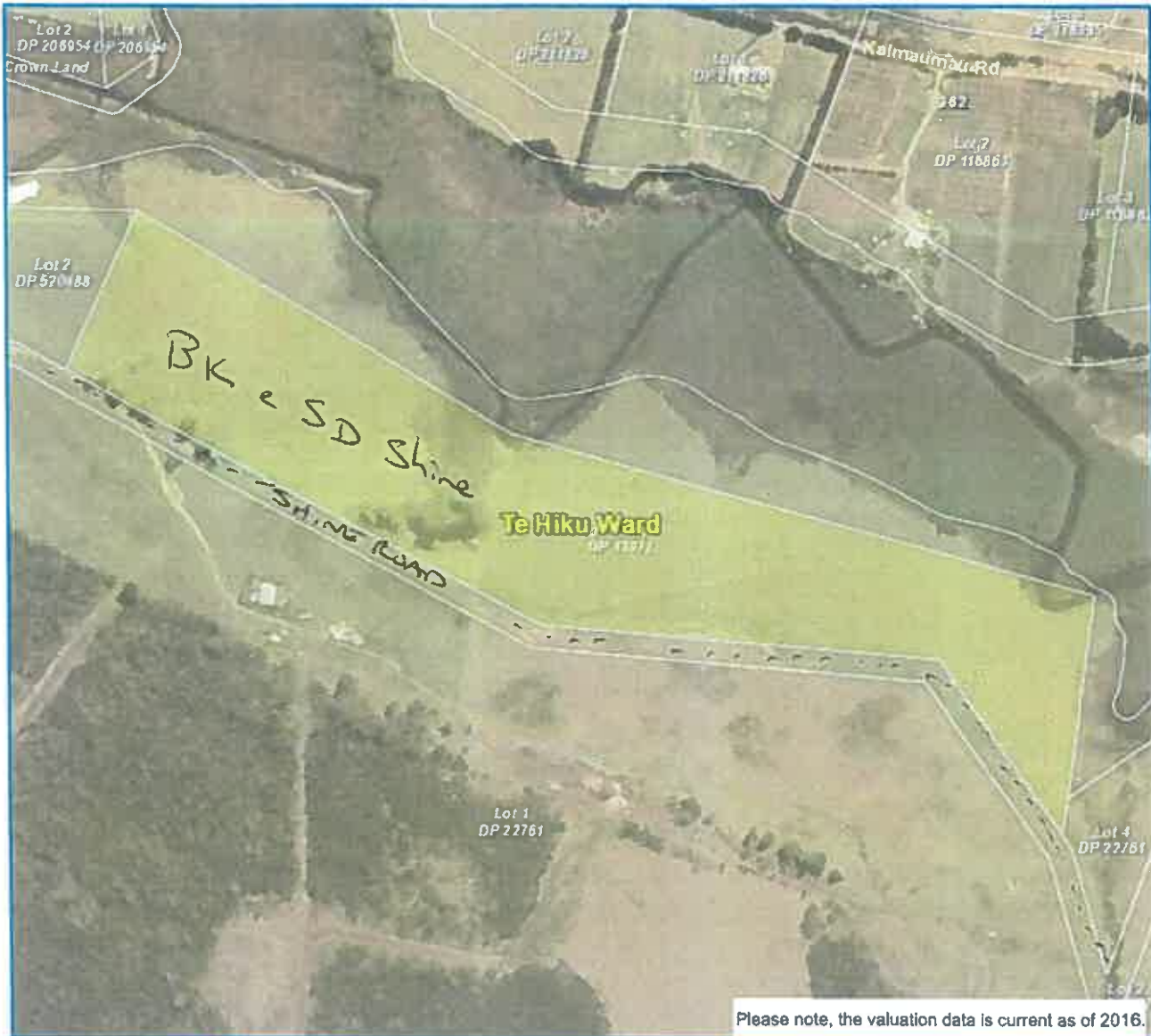


This map has been reproduced from the Far North District Council (FNDC) databases. Copyright and the information contained in it belongs to FNDC. No person may reproduce this map without the express written permission from FNDC. This is updated from time to time but may not be accurate. No reliance on the information contained on this map by any person is permitted. For the avoidance of doubt, this map does not constitute a LIM report. FNDC will not be liable for any omissions or errors of information contained on this map. FNDC recommends that persons seek specific advice on individual properties from FNDC and other specialist organisations which may hold more up to date or accurate information. Contractors are to verify the exact location of all Council services on site, before work commences. Contractors are liable for any damage they may cause to Council services including any services not identified on this plan. If you find information on this map that may not be accurate, please advise FNDC.

— Shine Road



This map has been reproduced from the Far North District Council (FNDC) databases. Copyright and the information contained in it belongs to FNDC. No person may reproduce this map without the express written permission from FNDC. This is updated from time to time but may not be accurate. No reliance on the information contained on this map by any person is permitted. For the avoidance of doubt, this map does not constitute a LIM report. FNDC will not be liable for any omissions or errors of information contained on this map. FNDC recommends that persons seek specific advice on individual properties from FNDC and other specialist organisations which may hold more up to date or accurate information. Contractors are to verify the exact location of all Council services on site before work commences. Contractors are liable for any damage they may cause to Council services including any services not identified on this plan. If you find information on this map that may not be accurate, please advise FNDC.



Valuation Number:	00013-13201
Address:	Pt Lot 1 Kaimaumau Road Waiharara, 0486
Legal Description:	Pt Lot 1 DP 13971
Capital Value:	\$195,000.00
Land Value:	\$185,000.00
Rate Account:	
Area (ha)	99997

This map has been reproduced from the Far North District Council (FNDC) database. Copyright and the information contained in it belongs to FNDC. No person may reproduce this map without the express written permission from FNDC. This is updated from time to time but may not be accurate. No reliance on the information contained on this map by any person is permitted. For the avoidance of doubt, this map does not constitute a LIM report. FNDC will not be liable for any omissions or errors of information contained on this map. FNDC recommends that persons seek specific advice on individual properties from FNDC and other specialist organisations which may hold more up to date or accurate information. Contractors are to verify the exact location of all Council services on site before work commences. Contractors are liable for any damage they may cause to Council services, including any services not identified on this plan. If you find information on the map that may not be accurate, please advise FNDC.